



The manufacturer powering *successful brands*

"No intermediaries. Direct communication. Results you can be proud of."

15+

YEARS IN ACTIVEWEAR

20+

COUNTRIES SUPPLIED

85+

READY-TO-CUT COLOURS

We've manufactured activewear for brands in the USA, Australia, and over 20 other countries. We understand what sells and how to build collections that keep customers coming back season after season.

Everything is made in our Bali facility by our dedicated team. No intermediaries, only fast turnaround, lower costs, consistent quality, and direct communication.

-
- Premium performance fabrics from the USA and Korea in 85+ ready-to-cut colours
-
- Sampling & production managed in-house — worldwide shipping via DHL
-
- Open pricing, no hidden charges, trained support online
-
- Launching your first line or scaling an existing brand — we're ready to help you succeed
-

From idea to *delivery*

Quick & straightforward

Our ready-to-order collection is the fastest and most straightforward way to launch or grow your activewear brand. Every style has already been designed, patterned, graded to international sizes, fit-tested, and cleared for production. Before ordering, we recommend checking our [Size Guide](#) to confirm the right fit for your market.

It's an ideal starting point for sampling, and an equally strong choice as your first bulk order. You're ordering from designs that are already proven.

Colours

Choose from any of our 85+ in-stock colours — selecting from stock is the fastest route, with samples in your hands in 2–3 weeks, or your bulk order ready in as little as 4 weeks. Prefer a specific colour not currently in stock? We can import it for you — just mention it when you enquire.

STEP 01

Build Your Collection

Choose from **ready-to-order** styles, submit **your designs**, or do **both**.

Ready-to-Order — Browse and select from [our shop](#). Order any style as-is, edited, or as a starting starting point for your own design.

Custom Designs — Send front and back screenshots or drawings with your chosen fabric, colour, and any changes noted. One style per page keeps things clear. We'll follow up before sampling begins if anything needs clarifying.

Mix & Match — Adding ready-to-order styles to a custom order? Include the catalogue style codes in your [email](#) and we'll handle the rest.

STEP 02

Confirm Pricing

We'll send a detailed, all-inclusive quote within 2–3 business days. What you're quoted is what you pay — no surcharges, no surprises.

STEP 03

Sampling

Once sampling is confirmed and the invoice is paid, allow 2–3 weeks for your samples to be made and delivered to your door via DHL Express — to any address worldwide in 3–5 business days.

Selecting from our in-stock colours? Super fast, Samples can be with you in as little as 2 to 3 weeks.

STEP 04

Bulk Production

Happy with the fit and finish? Approve your samples and move into production. Save time & money by skipping sampling and go straight to bulk. With in-stock colours and pre-graded ready-to-order styles, your completed order can be in your hands in as little as 4 weeks — retail-ready, individually packed, labelled, and barcoded, sell from the box.

Not sure where to start or how to place your order? [Get in touch](#) — we'll walk you through everything.

Fabrics & Colours

Performance fabric, ethically produced.

01 Comfort Luxe

02 Eco Olympus

03 Motion Luxe

85+ in-stock colours. No MOQ on stock colours, allowing you to add as many colours as you like.

AMERICAN REPREVE®

77% Recycled Nylon + 23% Spandex : 230 Gsm

Made from reclaimed nylon and post-consumer waste. Super soft with a cotton-like hand feel, moisture-wicking, and body-sculpting comfort. Our most requested fabric — close in hand feel & flexibility to Alo Yoga fabrics.

Pilates

Padel

Athleisure

Studio to Street

KOREAN CREORA POWER-FIT

73% Recycled Polyester + 27% Power-Fit Elastane : 260 Gsm

Offers a super strong compression designed to give you the maximum body support, giving gym enthusiasts a fabric that maintains shape and performance through repeated wear — outstanding recovery, resists sagging.

Gym

CrossFit

High-Intensity Training

AMERICAN NYLON

73% Recycled Nylon + 27% Spandex : 250 Gsm

A smooth, second-skin sensation with lasting support. The interlock weave enables fluid movement, quick bounce-back, and a fit that hugs every contour — exceptionally flattering in motion.

Pilates

Padel

Studio Training

Athleisure

*Not sure which fabric suits your market? Order a **Fabric Swatch Pack** — real samples and matching laser-printed colour cards, shipped directly to you.*

Ready-To-Order

Activewear *Collection*

A / W 2026





KT-52536

Halter Neck Square Scoop Sports Bra

Square neckline, elastic underbust band, open back

Eco Olympus : \$14.65

Comfort Luxe : \$15.27

Motion Luxe : \$14.25

KT-53057

High Waist Crossover Biker Shorts

Sculpting crossover V-waistband, contour fit

Eco Olympus : \$15.48

Comfort Luxe : \$16.21

Motion Luxe : \$14.97



KT-52537

Scoop Neck Cross Back Sports Bra

Scoop front, cross-strap open back

Eco Olympus : \$15.12

Comfort Luxe : \$15.85

Motion Luxe : \$14.67

KT-53058

High Waist Seamless Biker Shorts

Wide waistband, sculpting compression fit

Eco Olympus : \$14.97

Comfort Luxe : \$15.58

Motion Luxe : \$14.97



KT-52538

Halter Tie Neck Open Back Sports Bra

Scoop front, minimal compression, bare back

Eco Olympus : \$13.82

Comfort Luxe : \$14.37

Motion Luxe : \$13.47

KT-52539

High Waist Fold Over Mini Shorts

Fold-over waistband, high-rise compression mini fit

Eco Olympus : \$16.94

Comfort Luxe : \$17.95

Motion Luxe : \$15.94



KT-52540

Scoop Neck Y-Back Sports Bra

Adjustable Y-strap ring hardware, low-impact fit

Eco Olympus : \$13.92

Comfort Luxe : \$14.89

Motion Luxe : \$13.61

KT-52541

High Waist Crossover V-Waist Pocket Shorts

Side phone pockets, V-crossover waistband mini fit

Eco Olympus : \$14.99

Comfort Luxe : \$15.41

Motion Luxe : \$14.92



KT-52544

Deep V-Neck Twist Front Y-Back Sports Bra

Centre twist cutout, double-strap Y-back, low-impact

Eco Olympus : \$14.47

Comfort Luxe : \$15.44

Motion Luxe : \$14.34

KT-53061

High Waist Seamless Biker Shorts

scrunch back waistband, longer inseam biker length

Eco Olympus : \$15.48

Comfort Luxe : \$16.21

Motion Luxe : \$14.97



KT-51018

Scoop Neck Ring Back Sports Bra

Thin-strap with ring, open back

Eco Olympus : \$13.40

Comfort Luxe : \$14.56

Motion Luxe : \$12.95

KT-52724

High Waist Fold Over Brief Shorts

Wide fold-over band, cheeky brief cut

Eco Olympus : \$15.90

Comfort Luxe : \$16.74

Motion Luxe : \$15.46



KT-52748

High Waist Ultra Rise Shorts

Extra-tall waistband, cheeky compression cut fit

Eco Olympus : **\$14.96**

Comfort Luxe : **\$15.30**

Motion Luxe : **\$14.93**



KT-52549

Square Neck Long Sleeve Open Back Crop Top

Long-sleeve, thumbhole cuffs, V-back open

Eco Olympus : \$21.17

Comfort Luxe : \$22.76

Motion Luxe : \$20.40

KT-52561

High Waist Fold Over Training Shorts

Fold-over waistband with side panels

Eco Olympus : \$17.45

Comfort Luxe : \$18.58

Motion Luxe : \$16.73



KT-52727

Mid Rise Hipster Active Shorts

Flat waistband, smooth hipster bikini cut

Eco Olympus **: \$11.68**

Comfort Luxe **: \$11.99**

Motion Luxe **: \$12.91**



KT-51830

Scoop Neck Thin Strap X-Back Sports Bra

Adjustable cross back strap with binding

Eco Olympus : \$13.81

Comfort Luxe : \$14.35

Motion Luxe : \$13.96

KT-51831

High Waist Contour Seam Biker Shorts

Wide waistband, contoured side seam, no pocket

Eco Olympus : \$17.43

Comfort Luxe : \$18.35

Motion Luxe : \$17.94



KT-51838

Square Scoop Neck Racerback Sports Bra

Sculpting crop fit with binding, high-impact

Eco Olympus : \$15.85

Comfort Luxe : \$16.77

Motion Luxe : \$16.87

KT-51839

High Waist Double Band Seamless Biker Shorts

Double-band waistband, V-back seam, seamless

Eco Olympus : \$15.63

Comfort Luxe : \$16.46

Motion Luxe : \$15.94



KT-48980

Halter Twist Knot Deep-V Sports Bra

Twisted front, open-back, medium-impact crop

Eco Olympus	: \$15.90
Comfort Luxe	: \$16.91
Motion Luxe	: \$15.81

KT-53063

High Waist Crossover V-Cut Biker Shorts

Sculpting mid-thigh, seamless active fit

Eco Olympus	: \$14.95
Comfort Luxe	: \$15.83
Motion Luxe	: \$15.44



KT-51295

Mock Neck Half Zip Short Sleeve Crop Top

Cap sleeve, half-zip, sculpting seam detail

Eco Olympus : \$17.91

Comfort Luxe : \$18.92

Motion Luxe : \$18.52

KT-51296

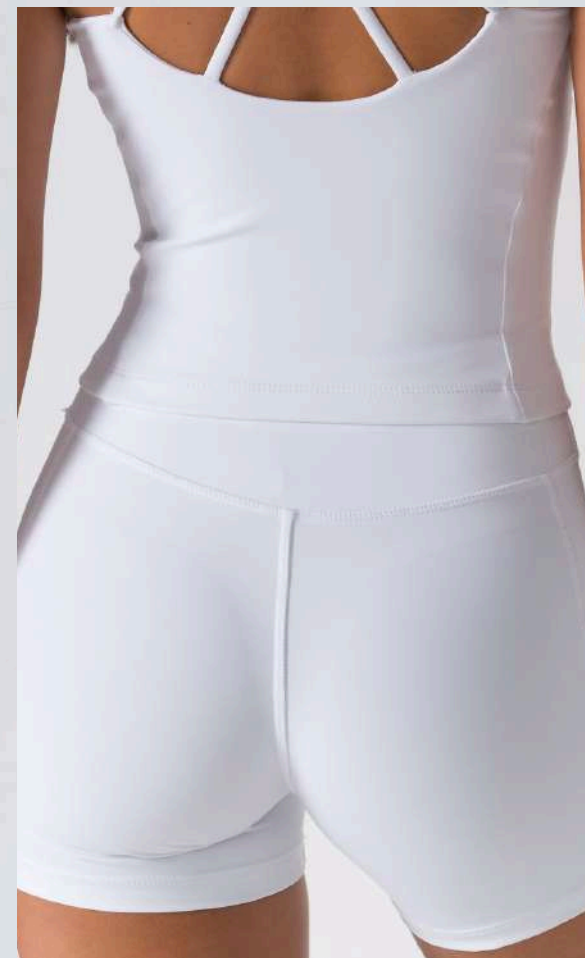
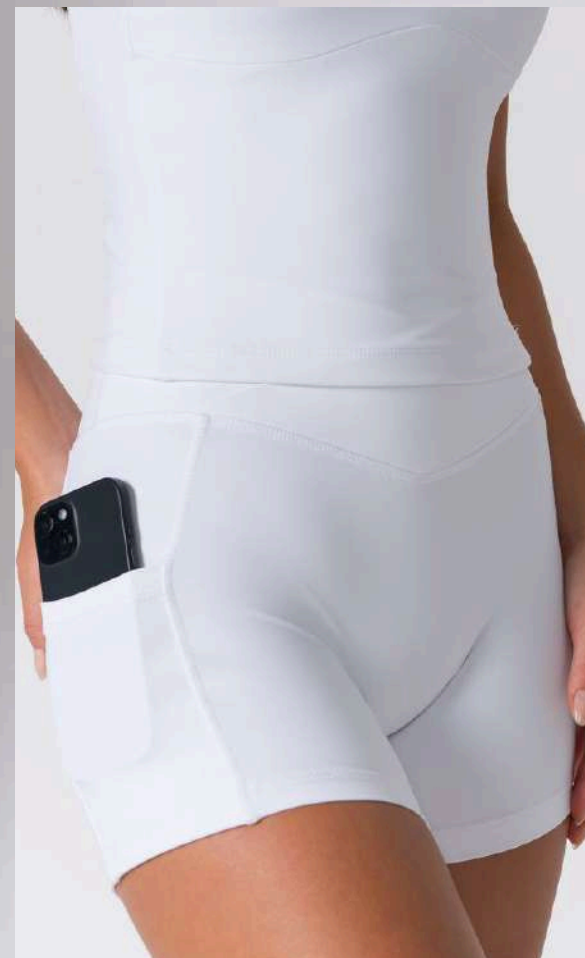
High Waist Sculpting Pocket Bike Shorts

Wide waistband, side phone pocket, fitted

Eco Olympus : \$16.47

Comfort Luxe : \$17.48

Motion Luxe : \$15.83



KT-52551

V-Scoop Neck Cross Back Tank

Double cross- straps, built-in shelf bra

Eco Olympus : \$19.15

Comfort Luxe : \$20.37

Motion Luxe : \$18.39

KT-52541

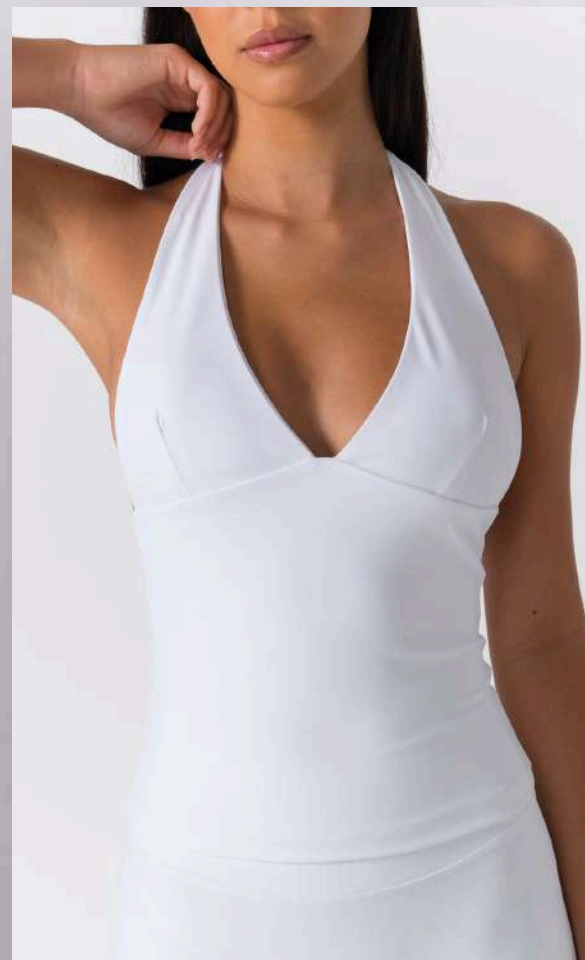
High Waist Training Shorts + Side Pocket

V flap waistband, side phone pocket

Eco Olympus : \$14.99

Comfort Luxe : \$15.41

Motion Luxe : \$14.92



KT-52547

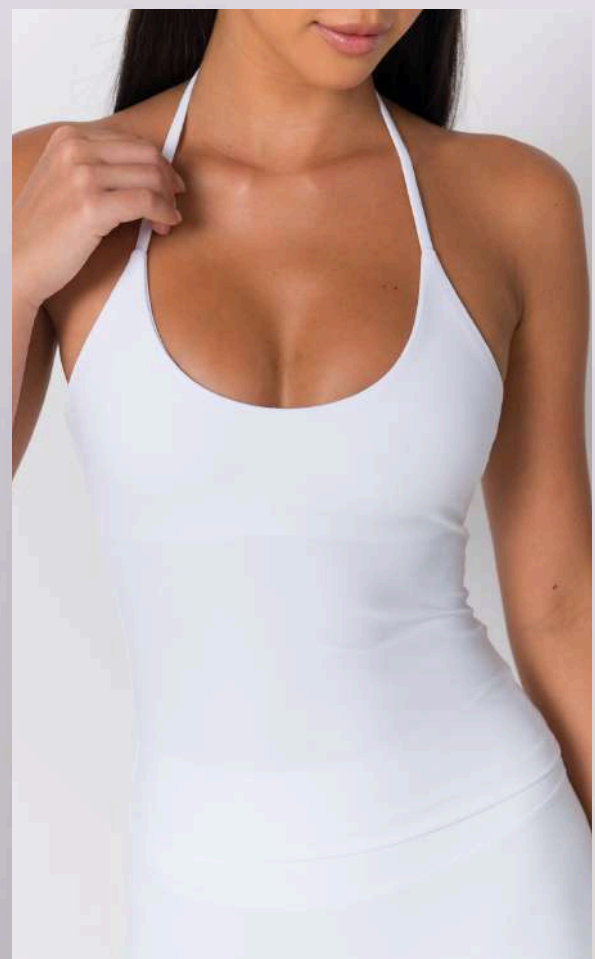
Halter V-Plunge Open Back Tank

Wide strap, sculpting compression fit

Eco Olympus : **\$18.77**

Comfort Luxe : **\$19.91**

Motion Luxe : **\$17.98**



KT-52554

Halter Scoop Neck Fitted Open Back Tank

Tie halter neck with shelf bra, long fitted silhouette

Eco Olympus : \$15.89

Comfort Luxe : \$16.74

Motion Luxe : \$15.36



KT-52550

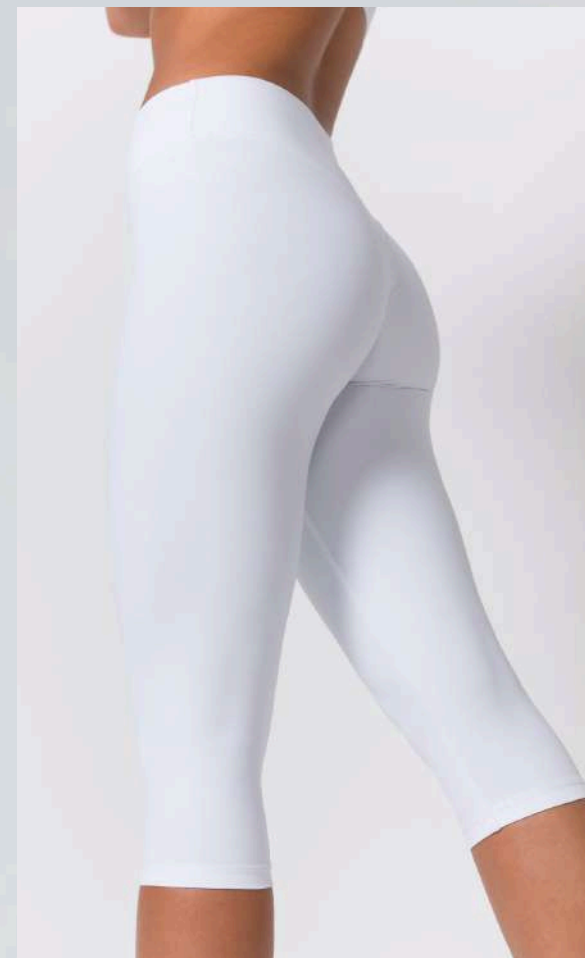
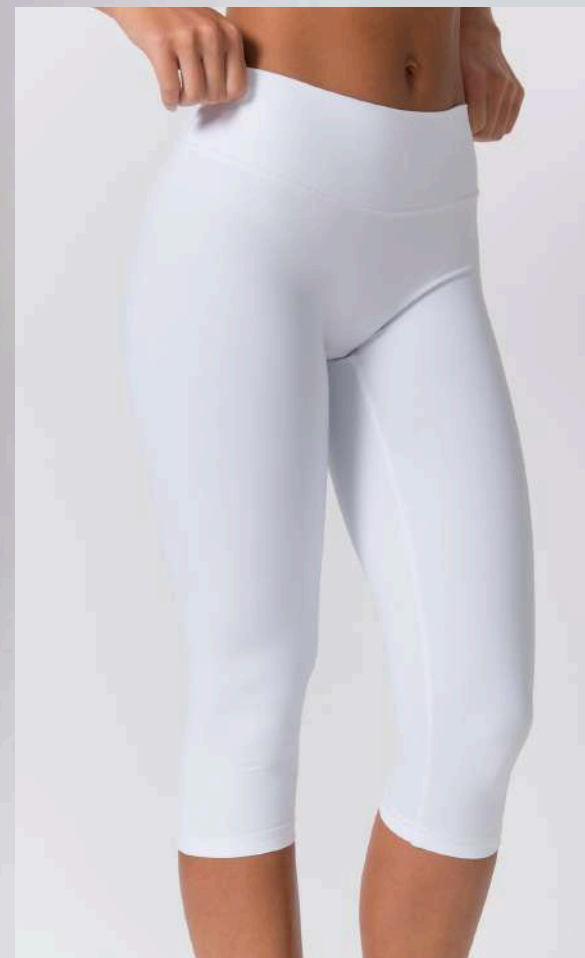
Halter Wrap Front Open-Back Tank

Twisted V-wrap bust, fitted waist-length silhouette

Eco Olympus : **\$15.41**

Comfort Luxe : **\$15.96**

Motion Luxe : **\$14.93**



KT-51021

Strapless Bandeau Sports Bra

Seamless strapless bandeau, clean minimal fit

Eco Olympus : \$12.80

Comfort Luxe : \$12.94

Motion Luxe : \$12.46

KT-53059

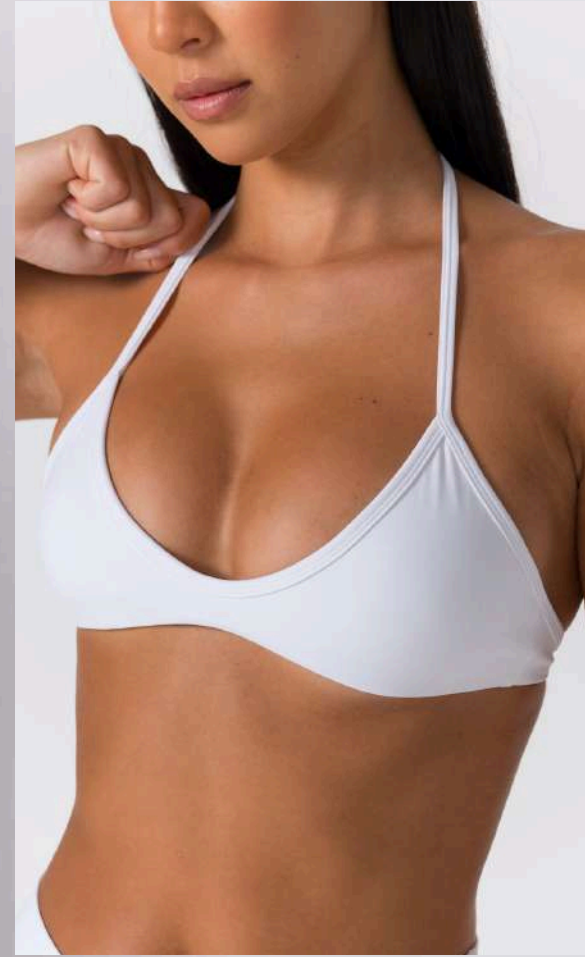
High Waist Capri Leggings

Wide waistband, sculpting compression capri fit

Eco Olympus : \$19.29

Comfort Luxe : \$19.51

Motion Luxe : \$18.96



KT-51004

Halter Triangle Open Back Sports Bra

Adjustable halter strap, deep V triangle cups

Eco Olympus : \$12.80

Comfort Luxe : \$13.42

Motion Luxe : \$12.49

KT-53060

High Waist Crossover V-Waist Leggings

Second-skin fit, full-length sculping compression

Eco Olympus : \$20.69

Comfort Luxe : \$22.30

Motion Luxe : \$19.68



KT-52542

Deep V-Neck Cross Back Sports Bra

Thin cross straps, deep V plunge

Eco Olympus : \$13.40

Comfort Luxe : \$14.47

Motion Luxe : \$13.40

KT-52543

High Waist Fold Over Full Length Leggings

Fold-over waistband, buttery second-skin full length

Eco Olympus : \$21.63

Comfort Luxe : \$23.40

Motion Luxe : \$20.51



KT-53062

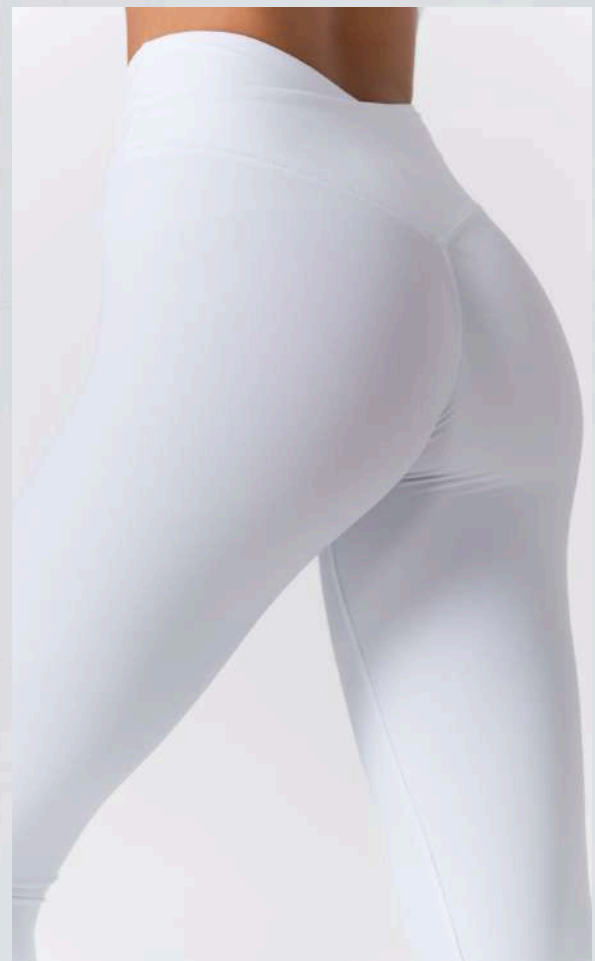
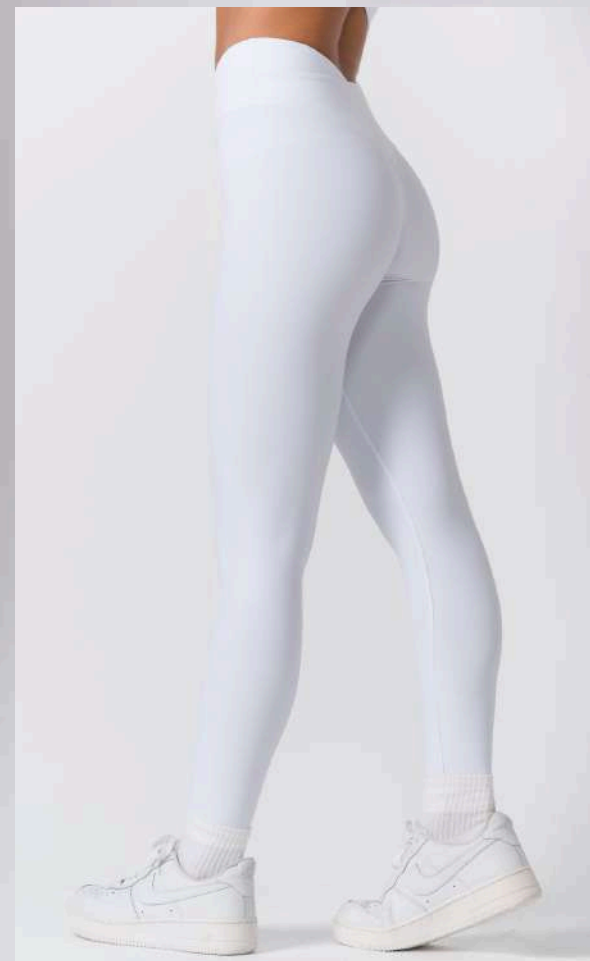
High Waist Crossover V-Waist Flare Leggings

V-crossover waist, sculpting compression flared leg

Eco Olympus : \$23.94

Comfort Luxe : \$26.50

Motion Luxe : \$22.78



KT-51825

Scoop Neck Racerback Wrap Hem Sports Bra

Binding top racerback, crossover wrap underbust hem

Eco Olympus : \$16.86

Comfort Luxe : \$17.88

Motion Luxe : \$17.91

KT-51826

High Waist Crossover V-Waist Sculpting Leggings

Crossover V-waist, contoured back seam, full-length

Eco Olympus : \$22.33

Comfort Luxe : \$23.95

Motion Luxe : \$21.88



KT-51829

Square Neck Thin Strap Adjustable Crop Top

Adjustable straps, diagonal panel

Eco Olympus : \$15.58

Comfort Luxe : \$15.96

Motion Luxe : \$15.92

KT-51840

High Waist Seamless V-Back Full Length Leggings

Flat front waistband, V-back seam, sculpting fit

Eco Olympus : \$20.69

Comfort Luxe : \$22.30

Motion Luxe : \$20.98



KT-48974

Square Neck Dual Strap Open Back Sports Bra

Layered scoop neck with binding straps for a secure fit

Eco Olympus : \$15.26

Comfort Luxe : \$15.97

Motion Luxe : \$15.45

KT-53064

High Waist Flat Band Sculpting Leggings

Full-length, second-skin active fit

Eco Olympus : \$23.55

Comfort Luxe : \$25.53

Motion Luxe : \$22.31



KT-48978

Deep V-Neck Adjustable Strap Sculpting Tank

V-neck with adjustable straps

Eco Olympus : \$17.77

Comfort Luxe : \$18.87

Motion Luxe : \$17.94

KT-53065

High Waist Deep Fold Over Flare Leggings

Wide-band, full-length, sculpting flare fit

Eco Olympus : \$23.82

Comfort Luxe : \$26.60

Motion Luxe : \$25.42



KT-52545

Halter Deep-V Open Back Sports Bra

Deep-plunge neckline, fully bare back

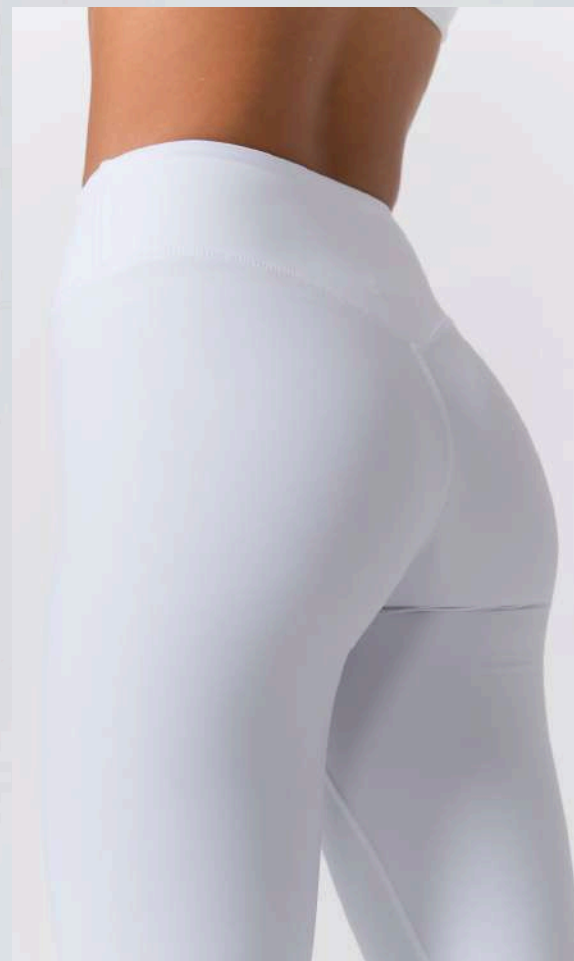
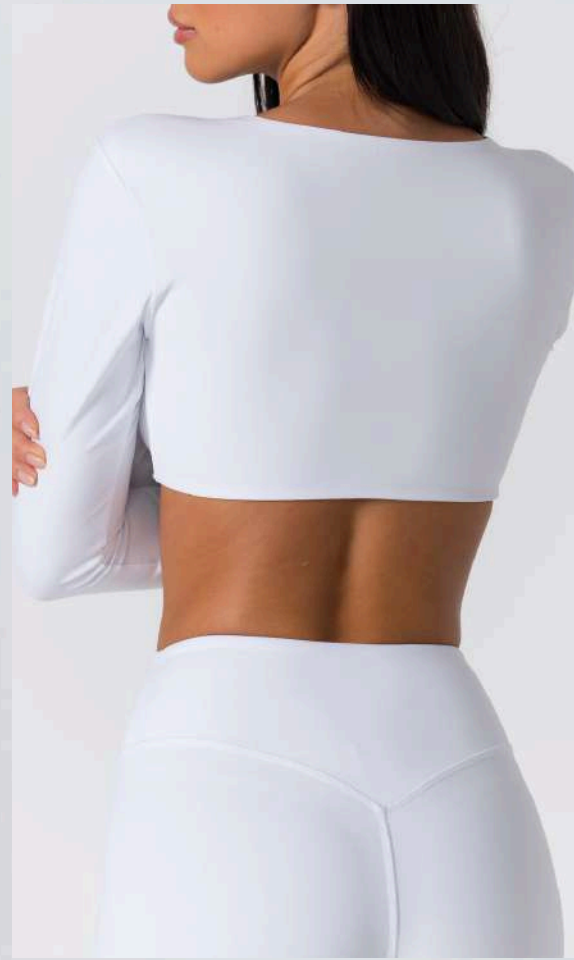
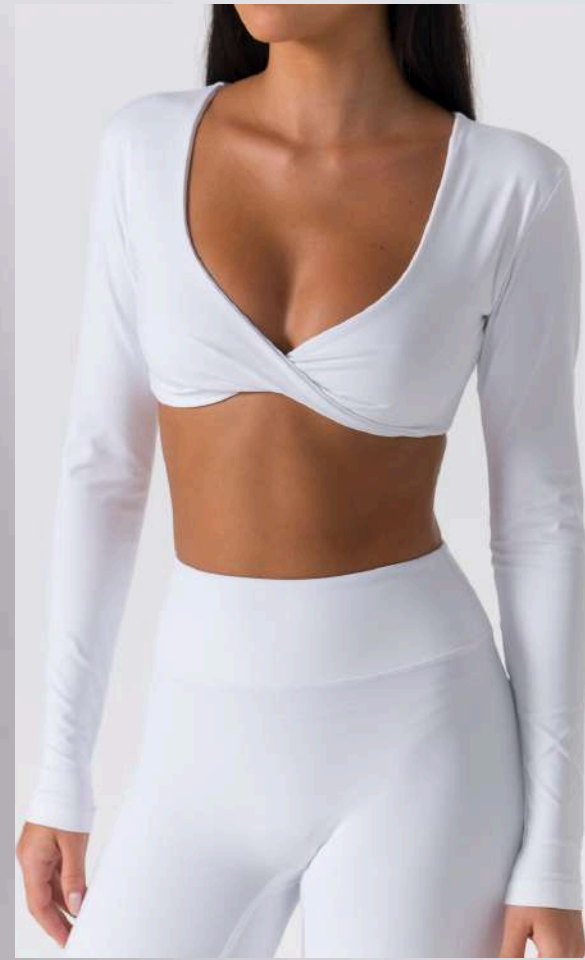
Eco Olympus	: \$14.18
Comfort Luxe	: \$14.72
Motion Luxe	: \$13.84

KT-52546

High Waist Fold Over Flare Leggings

Fold-over waistband, full-length flared leg

Eco Olympus	: \$25.76
Comfort Luxe	: \$28.82
Motion Luxe	: \$27.35



KT-48993

Deep V-Neck Twist Front Long Sleeve Crop Top

Thumb-hole cuffs, fitted crop

Eco Olympus : \$19.97

Comfort Luxe : \$21.81

Motion Luxe : \$21.89

KT-53066

High Waist High Sheen Sculpting Leggings

Full-length, glossy second-skin active fit

Eco Olympus : \$20.63

Comfort Luxe : \$22.23

Motion Luxe : \$20.62



KT-48984

Scoop Neck Classic Racerback Sports Bra

Binding, high-impact crop

Eco Olympus : \$13.54

Comfort Luxe : \$14.21

Motion Luxe : \$13.96

KT-48998

High Waist Side Seam Panel Full Length Leggings

Sculpting, full-length, contour side-panel fit

Eco Olympus : \$21.51

Comfort Luxe : \$22.98

Motion Luxe : \$21.79



KT-52555

Halter Scoop Neck Open Back Short Romper

Shelf bra, tie-halter neck, short length

Eco Olympus : \$20.91

Comfort Luxe : \$21.94

Motion Luxe : \$19.60



KT-52556

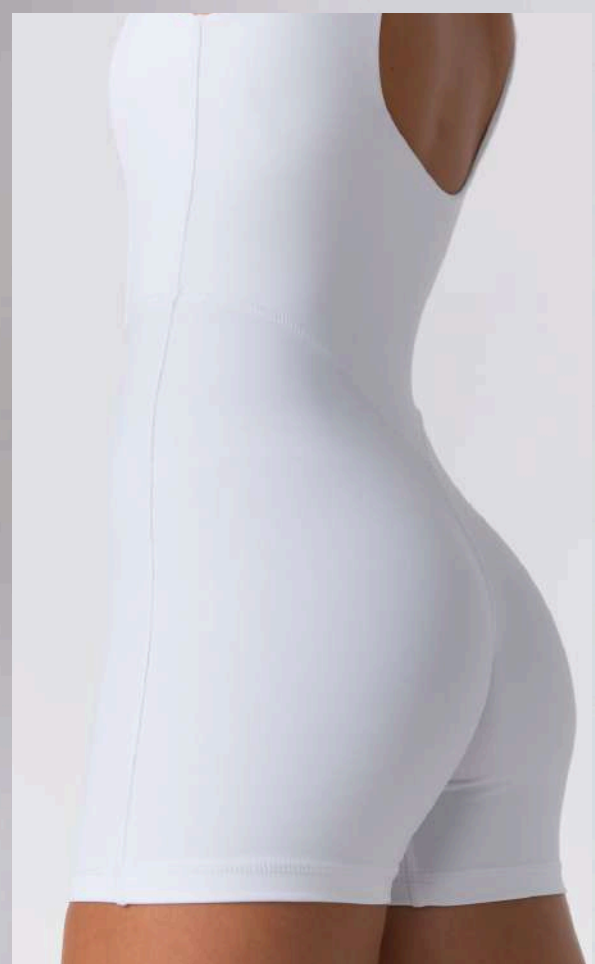
Halter Scoop Neck Open Back Biker Romper

Fixed halter, open back, mid-thigh length

Eco Olympus : **\$19.58**

Comfort Luxe : **\$20.95**

Motion Luxe : **\$19.28**



KT-43992

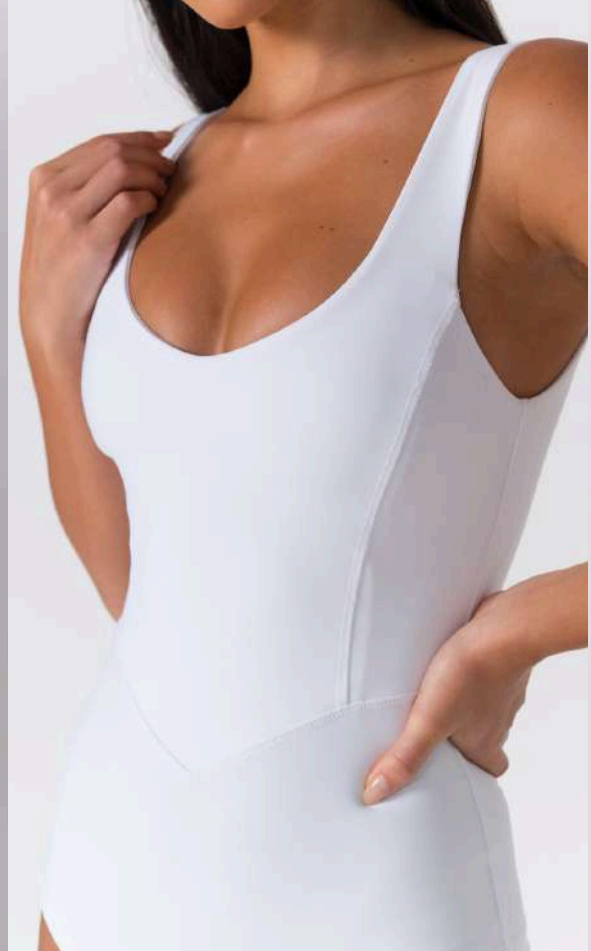
Scoop Neck Wide Strap Open Back Biker Romper

Wide straps, low open back, mid-thigh length

Eco Olympus : \$21.58

Comfort Luxe : \$23.41

Motion Luxe : \$20.63



KT-52405

Scoop Neck Wide Strap High Cut Bodysuit

Wide straps, sculpted seams, high-cut leg

Eco Olympus : **\$20.84**

Comfort Luxe : **\$22.84**

Motion Luxe : **\$19.93**



KT-50955

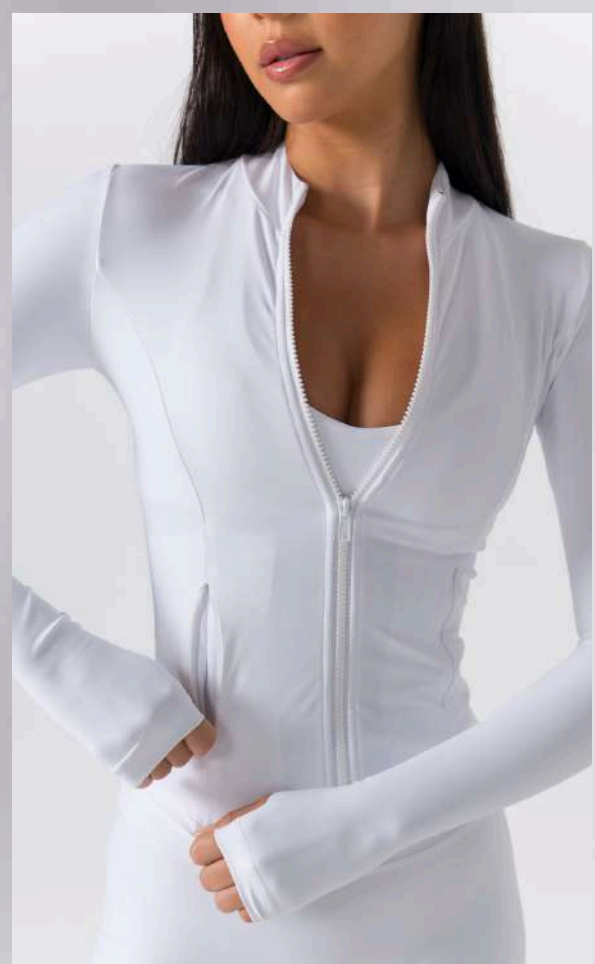
Crew Neck Long Sleeve Open Back Biker Romper

Round back cut-out, sculpting biker shorts

Eco Olympus : \$24.65

Comfort Luxe : \$26.46

Motion Luxe : \$25.27



KT-48987

Full Zip Sculpting Athletic Jacket

Fitted zip, thumbhole cuffs, zip pocket

Eco Olympus : \$25.12

Comfort Luxe : \$26.85

Motion Luxe : \$23.89



KT-48986

Scoop Neck Open Back Long Sleeve Bolero

Thumb-holes, active layering piece

Eco Olympus : **\$15.93**

Comfort Luxe : **\$16.90**

Motion Luxe : **\$16.35**

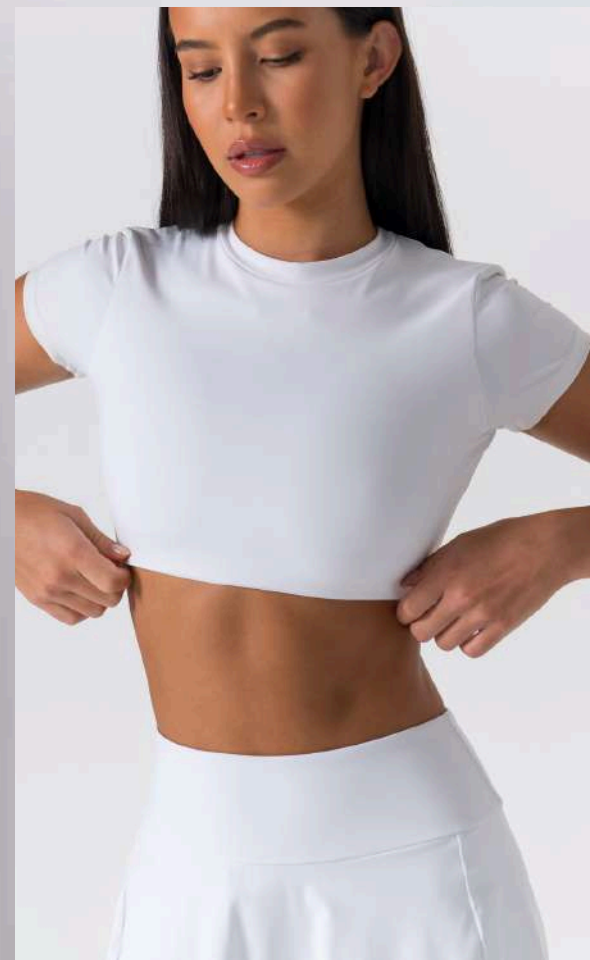


Ready-To-Order

Court *Collection*

A / W 2026





KT-51299

Crew Neck Open Back Short Sleeve Crop Top

Cap sleeve, diagonal cross-panel cutout back

Eco Olympus : \$19.46

Comfort Luxe : \$19.93

Motion Luxe : \$19.97

KT-51300

High Waist Wide Band Flare Pocket Tennis Skirt

Built-in shorts, side pocket

Eco Olympus : \$18.94

Comfort Luxe : \$19.92

Motion Luxe : \$19.88



KT-52548

Scoop Neck Racerback Crop Top

Scoop neckline with shelf bra, fitted racerback crop top

Eco Olympus	: \$16.14
Comfort Luxe	: \$17.15
Motion Luxe	: \$15.57

KT-52726

Tiered Ruffle Tennis Skirt

Double-layer ruffle hem, built-in shorts liner

Eco Olympus	: \$19.37
Comfort Luxe	: \$19.83
Motion Luxe	: \$18.92



KT-52725

High Waist Fold Over Mini Skort

Fold-over waistband, built-in brief liner

Eco Olympus **: \$18.91**

Comfort Luxe **: \$19.87**

Motion Luxe **: \$20.98**



KT-51290

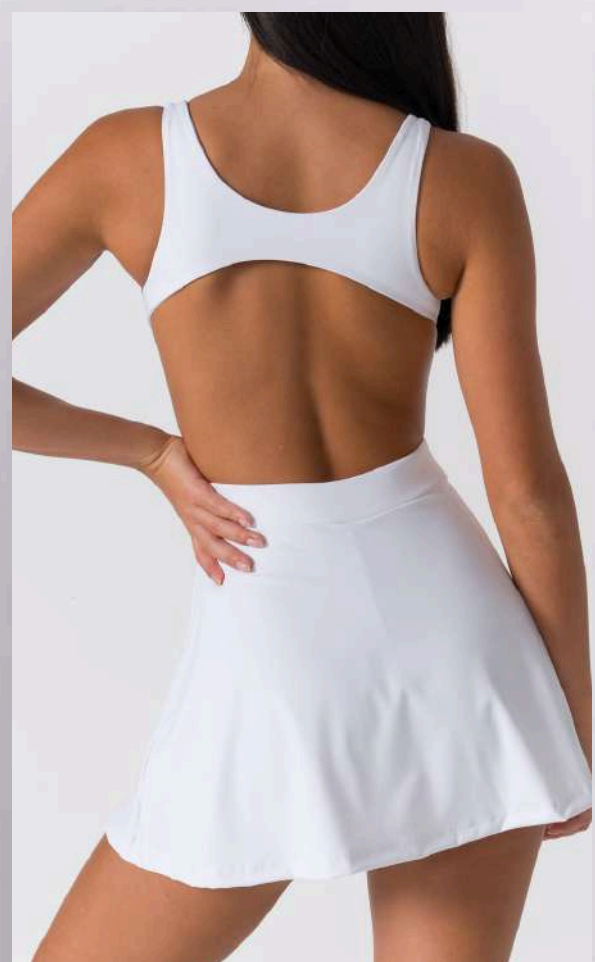
V-Scoop Cross Back Flare Tennis Dress

Built-in shorts, side pocket

Eco Olympus : **\$25.97**

Comfort Luxe : **\$27.94**

Motion Luxe : **\$26.91**



KT-51292

Square Neck Open Back Tennis Dress

Flared skirt, built-in shorts, side pocket

Eco Olympus : **\$26.81**

Comfort Luxe : **\$27.77**

Motion Luxe : **\$27.89**



KT-51293

Halter V-Neck Open Back Crop Tank

Deep V front with binding, bare open back, cropped

Eco Olympus : \$16.47

Comfort Luxe : \$16.99

Motion Luxe : \$16.90

KT-51302

Flare Pocket Tennis Skirt

Built-in shorts, side pocket

Eco Olympus : \$19.76

Comfort Luxe : \$20.43

Motion Luxe : \$19.89



KT-51297

Deep-V Halter Sports Bra

Plunging neckline, flattering fit, sleek open back

Eco Olympus : \$14.48

Comfort Luxe : \$14.93

Motion Luxe : \$14.97

KT-51298

High Waist Crossover V-Waist Flare Tennis Skirt

Built-in shorts, side pocket, flared hem

Eco Olympus : \$19.16

Comfort Luxe : \$19.98

Motion Luxe : \$19.68

Adding Your Own *Custom Designs*

Bring your designs. We'll bring them to life.

Want to create something beyond this catalogue? We specialise in fully custom activewear production and can handle it smoothly, whether you need one custom style with catalogue pieces or a completely original collection.

The handover is easy.

Send us front and back screenshots, tech packs, or clear line drawings. Note your chosen fabrics, colours, and any fit details. ***Keep each page to one style for the fastest review.***

We'll come back with a detailed price quote within 2–3 business days.

Send your designs by [email](#) or [WhatsApp](#)—whichever is easier.

Ready to lock in your numbers?

Our pricing is designed to support a healthy retail markup. Once you know your costs, you can plan samples or bulk orders with full confidence before committing to any units.



MOQs & *Branding*

Minimum Order Quantities

READY-TO-ORDER STYLES

250

pieces per PO

30

per style

3

pieces per size & colour

CUSTOM OR MIX & MATCH

300

pieces per PO

30

per style

4

pieces per size & colour

A typical order would be 2 leggings (maybe high- and low-waist), 3 sports tops, and 1 or 2 pairs of shorts. In 4 colours and 3 sizes.

Branding

Heat Press Logo

INCLUDED FREE

Heat-pressed inside every bulk order piece. Additional placements on request.

Woven Labels & Hangtags

RECOMMEND

Custom woven neck label, care label, hangtags, and branded packaging — all in-house.

Elasticated Jacquard Banding

PREMIUM

Your brand name **woven into the waistband elastic** — Nike and Lululemon's technique. Tactile, memorable, and justifies a higher retail price.

We require your artwork in EPS, PDF, CDR or SVG — vector, high resolution. Send them by email or WhatsApp.

READY TO TAKE THE NEXT STEP?

Contact Us

Let's Build Your *Activewear* Brand

With over 15 years of activewear manufacturing experience, we know what works, what to avoid, and how to get your range from concept to market efficiently. Brands that connect with us early launch faster, make smarter decisions, and grow with less stress.

We welcome brand visits to our Bali studio — contact us to arrange a visit.

[!\[\]\(e83b2296dc4c9009963f494078a8a780_img.jpg\) **Schedule a Call-Back**](#)

[!\[\]\(1656df77d289379892e822a5b403488d_img.jpg\) **WhatsApp**](#)

[!\[\]\(df1e685f12c5c6fa21f71a7bc565bcc0_img.jpg\) **Email Us**](#)

[!\[\]\(baf4ee523d4e81665920305b5f65077c_img.jpg\) **Visit Our Factory**](#)