

AW25 — COLLECTION

Ready To Order





Effortless *Style.* *Elite* Performance.

Step into **Active AW 2025**—a bold, curated edit designed to set your brand apart. Inspired by proven best-sellers and trends leading into 2026 and beyond. Add your custom-branded logo, heat-pressed inside each piece, and style it with classic accessories to make the collection uniquely yours.

Once you've selected your styles, choose from premium recycled fabrics, including **Power-Fit®** (Korea), **REPREVE®** (USA), and **Carvico®/ECONYL®** (Italy), offering superior compression, flexibility, and durability for high-performance wear.

ACTIVEWEAR BALI

Requesting Samples

Ready Designs

You may or may not make samples. If you are requesting our ready-to-order designs, as they have all been pre-patterned and graded to international body sizes, many brands opt to skip sampling and move directly to bulk, saving both time and money in the process.

The choice is always yours, to make or not to make.

You may also request changes to any design. For example, you can adjust the width of the waistband or the length of the legging.

All we require is a front and back screenshot, clear line drawing, or tech pack, along with notes of each edit.

Cost: \$30 per pattern edit.

Ready designs can be purchased directly from [our shop](#) or by adding their codes to a [sample request form](#). Your selected styles will be produced exactly as shown in our catalogue, in your chosen colours and prints.

Custom Designs

When opting to produce custom activewear samples, you need to get them [priced first](#). With prices in hand, add our codes to this [form](#), informing us which fabric, colours, or prints you want, via [email](#) or [WhatsApp](#).

Pricing & Profit Tips

- Get pricing sorted early on. With prices in hand, you'll be ready to place your order whenever you're ready, as well as be able to estimate landed costs, helping you calculate retail prices and profit margins.
- Aim for at least a 3.5X markup on wholesale prices. For example, a legging @ \$20 often retails for \$99, with sports tops or shorts @ \$15 each, retailing in the region of \$75 USD each.

MOQs

Ready-*to*-Order Designs

180 pieces per PO, 30 per style, 3 pieces per size & colour.

Example Order: 2 styles of leggings 30 shorts, and 3 types of tops.

Custom Designs *or* Mix & Match Orders

240 pieces per PO, 30 per style, 5 pieces per size & colour.

Example Order: 3 leggings, 3 sports tops, 1 pair of training shorts, & 1 additional style.



Selecting Fabrics & Colours

All our Activewear fabrics are blended with Spandex, offering varying degrees of compression and flexibility to suit a range of different activities.

- **Comfort Luxe:** With a cotton-like feel, moisture-wicking, and body-sculpting properties, select this fabric for activities requiring more flexibility, such as Pilates, CrossFit, Padel, lighter workouts, and athleisurewear. Comparable to Lululemon fabrics.
- **Eco-Olympus:** Blended with Creora® Power-Fit Spandex from Korea, highly sought after by brands selling to gym addicts demanding strong compression and firm body support.

You can choose from over 85 trending colours we keep in stock for immediate use, helping you avoid delays from overseas imports. If the colour you need isn't in stock, we import them by air weekly. Custom colours arrive in 70m rolls, producing around 45 leggings and sports top sets, must be used entirely in your bulk PO, and generally take around four weeks to arrive.

See the Stock [**Fabrics and Colours**](#).

Note

Stock colours have no MOQ, allowing you to add more colour options to your collection.

Adding *Digital* Prints

We use advanced Italian MS digital and sublimation print machines on American and Korean fabrics to create prints with unmatched colour saturation and softness. Every meter of fabric comes alive with vibrant, long-lasting colours that surpass anything printed locally in Bali.

Learn how easy it is to [**add prints**](#) to your collection.

Fabric *Swatch* Packs

A cost-effective way to know the most suitable fabric for the market you are aiming for. Includes real fabric samples, matching laser-copy colour cards, and a curated selection of accessories.

[**Shop Fabrics Packs**](#)

Placing Orders

Option 1: *Ready-to-Order Designs*

- Browse the collection below taking note of the codes for the styles you want to work with.
- Choose your fabric, colour, or request a digital print.
- Fill out the **order form** with quantity per size.

Tip: All styles have been pre patterned ready for production.

Option 2: *Custom Designs*

- Send your own custom creations as front and back screenshots or clear line drawings or tech packs.
- Add notes on any changes required, such as waistband width or editing a leggings length
- Label each design with a code. e.g. Lovina Leggings 001

Option 3: *Mix & Match*

Just send your custom designs along with the codes of the ready styles you'd like to combine them with. We'll guide you on how to bring them together into one seamless collection.

Need Help Formulating Your Order?

Some brand owners struggle to match designs and colours with our MOQs. Its normal, so just reach out.

Schedule a Callback Today

Speak to a specialist in our activewear division. Schedule a **call-back** and find out if we are a good mix.

Your activewear will arrive custom branded with your unique logo, (included in our price). Also, we never add surcharges.

Accessorizing & Branding

Activewear accessories have their limits, but adding elasticated Jacquard with your logo—like Nike’s “Just Do It” slogan and tick symbol under the bust or around the waist—will elevate any brand, making it easy for customers to recognize. Branding supports business growth, strengthens brand identity, and builds customer loyalty.

Specialty branding is handled overseas to ensure superior craftsmanship compared to local Bali suppliers. Our suppliers work with leading brands such as Lululemon, Stronger the Label, Carbon38, and P.E Nation.

For bulk orders, we apply your custom logo as a heat press on the inside back of each piece. Since this step is essential before production, we recommend organizing it during the sampling phase to avoid delays.

Read more on [custom branding & accessorizing](#).

Artwork

Artwork should be provided in Vector format in high resolution and to scale, such as EPS, PDF, CDR, or SVG. Please upload your artwork, layouts, prints, etc. via our [Tick Box Form](#) or, if you prefer, [email](#) or [WhatsApp](#). Once we receive it, we will get in touch with you.

Need help? If you require assistance with logos or layouts, members of our graphics team are available to assist you.



AW25

Ready To Order
Collection



You may select your styles from more than one collection, in any fabric, colour or print.



Vetra Set

Sports Top Twist Front - AW 25-001

*Keyhole front, criss-cross back. Supportive and breathable.
4-way stretch · Sweat-wicking · Medium support*

Solid Colours	: \$17.50 - \$17.97
Printed	: \$17.93 - \$18.46



Training Shorts Ruched Back - AW 25-002

*Seamless, high-waist fit with scrunch back for sculpting hold.
Squat-proof · No front seam · Body-contouring*

Solid Colours	: \$15.97 - \$17.40
Printed	: \$17.60 - \$18.20





Lunor Set

Sports Top Racer Back - AW 25-003

*Twist-front with wide straps and racerback with a chic athleisure edge.
Medium support · 4-way stretch · Breathable*

Solid Colours	: \$16.99 - \$17.90
Printed	: \$17.99 - \$18.50



Training Shorts V Wrap - AW 25-004

*V-front waistband and seamless front for a smooth, sculpted fit.
No camel toe · Squat-proof · Flattering silhouette*

Solid Colours	: \$16.50 - \$17.40
Printed	: \$17.75 - \$17.99



Soln Set

Halter Top Binding Ruched Front - AW 25-005

Minimal triangle cut with thin straps and soft underbust band.

Light support · Sleek fit · Everyday comfort

Solid Colours	: \$14.99 - \$15.60
Printed	: \$15.99 - \$16.50

Training Short No Front Seam - AW 25-006

Seamless with ribbed waistband and sculpting contours.

High-waisted · No front seam · Flattering fit

Solid Colours	: \$16.90 - \$17.50
Printed	: \$17.99 - \$18.48





Velar Set

Sports Top Twist Front - AW 25-001

*Keyhole front, criss-cross back. Supportive and breathable.
4-way stretch · Sweat-wicking · Medium support*

Solid Colours	: \$17.50 - \$17.97
Printed	: \$17.93 - \$18.46



Biker Short V Wrap No Front Seam - AW 25-007

*Seamless and high-waisted with ribbed waistband and contour detailing.
No front seam · Sculpting effect · Smooth silhouette*

Solid Colours	: \$17.50 - \$18.40
Printed	: \$18.90 - \$19.50





Thyra Set

Asymmetric Top Double Strap - AW 25-008

*Straight neckline with double straps and open back.
Medium support · Clean lines · 4-way stretch*

Solid Colours	: \$16.90 - \$17.50
Printed	: \$17.90 - \$18.40



Training Short With Pocket - AW 25-009

*High-waisted with contour panels and side pockets.
Functional · Sculpting · No camel toe*

Solid Colours	: \$17.90 - \$18.46
Printed	: \$18.44 - \$19.79





Kynex Set

Halter Top Binding Ruched Front - AW 25-005

Minimal triangle cut with thin straps and soft underbust band.

Light support · Sleek fit · Everyday comfort

Solid Colours	: \$14.99 - \$15.60
Printed	: \$15.99 - \$16.50

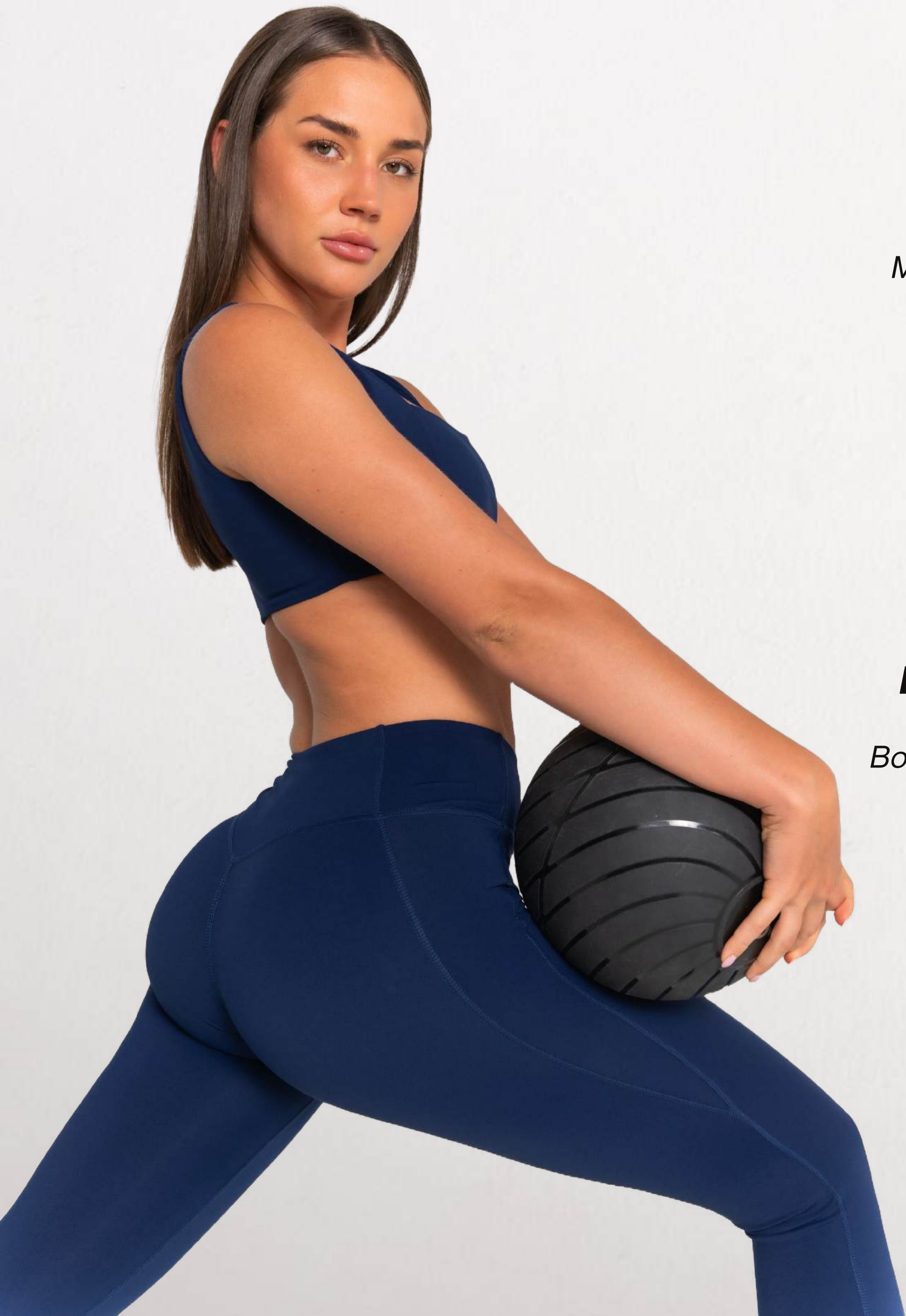
Legging V Wrap No Front Seam - AW 25-010

High-waisted with seamless front and sculpting fit.

Sculpting · No front seam · Second-skin feel.

Solid Colours	: \$21.99 - \$23.90
Printed	: \$24.50 - \$25.99





Zevi Set

Top Panel Square Neck - AW 25-011

*Square neckline with wide straps and open back.
Medium support · Sleek silhouette · Breathable stretch*

Solid Colours	: \$16.50 - \$17.40
Printed	: \$17.50 - \$18.40



Legging Panel No Front Seam - AW 25-012

*High-waisted with no front seam and sculpting fit.
Body-hugging · Seamless front · Flattering from all angles*

Solid Colours	: \$23.40 - \$24.99
Printed	: \$25.90 - \$27.50





Elara Set

Top Scoop Neck Layered Binding - AW 25-013

*Layered scoop neck with binding straps for a secure fit.
Structured feel · Medium support · Sleek finish*

Solid Colours	: \$16.90 - \$17.50
Printed	: \$17.90 - \$18.50



Legging No Seam Waistband - AW 25-014

*High-waisted with panel waistband for a smooth, sculpting fit.
Flattering hold · Sculpting shape · No front seam*

Solid Colours	: \$23.50 - \$25.50
Printed	: \$26.40 - \$27.99





Syra Set

Top Scoop Neck Cross Back - AW 25-015

Wide underbust band and criss-cross back for stylish support.

Secure fit · Sculpting · All-day comfort

Solid Colours : \$17.75 - \$17.96

Printed : \$18.42 - \$18.98



Legging Panel Pocket Full Length - AW 25-016

Panel waistband, back pocket, no front seam for sculpted look.

High-waisted · Functional · Flattering finish

Solid Colours : \$23.99 - \$25.90

Printed : \$26.90 - \$28.50





Omira Set

***PRICES BELOW ARE WITHOUT JACQUARD**

Top Scoop Neck Piping Jacquard - AW 25-017

*Scoop neck, wide band, slim racerback for all-day comfort.
Light support · Soft hold · Minimalist design*

Solid Colours	: \$19.40 - \$19.99
Printed	: \$19.94 - \$21.20



Legging 7/8 No Seam Panel Jacquard - AW 25-018

*High-rise 7/8 cut with panel waistband and contour accents.
No front seam · Sculpting fit · Streamlined silhouette*

Solid Colours	: \$22.40 - \$23.99
Printed	: \$24.90 - \$26.40





Ziora Set

Top V Neck Y Back - AW 25-019

*Minimal V-neck with Y-back and adjustable straps for a sleek fit.
Light support · Soft band · Clean finish*

Solid Colours	: \$15.99 - \$16.50
Printed	: \$16.90 - \$17.40



Flare Legging V Wrap No Seam - AW 25-020

*Seamless front, contour fit, and flare hem for a sculpted look.
Flattering shape · No front seam · Elongated silhouette*

Solid Colours	: \$24.90 - \$26.90
Printed	: \$27.90 - \$29.50





Treva Set

Top Scoop Neck Racer Back- AW 25-021

*Curved neckline, wide straps, and underbust cut for lift and comfort.
All-day wear · Supportive fit · Sculpted silhouette*

Solid Colours	: \$14.90 - \$15.50
Printed	: \$15.90 - \$16.50



Flare Legging No Seam - AW 25-022

*Seamless front with contour waistband for a flexible, elongating fit.
No front seam · Moves with you · Flattering flare*

Solid Colours	: \$25.90 - \$28.90
Printed	: \$29.45 - \$32.49





Altra Set

Tank Top V Neck Adjustable - AW 25-023

Scoop neck longline with adjustable straps and built-in support.

Sculpting · Supportive · Made to move

Solid Colours : \$18.99 - \$19.98

Printed : \$19.94 - \$21.87

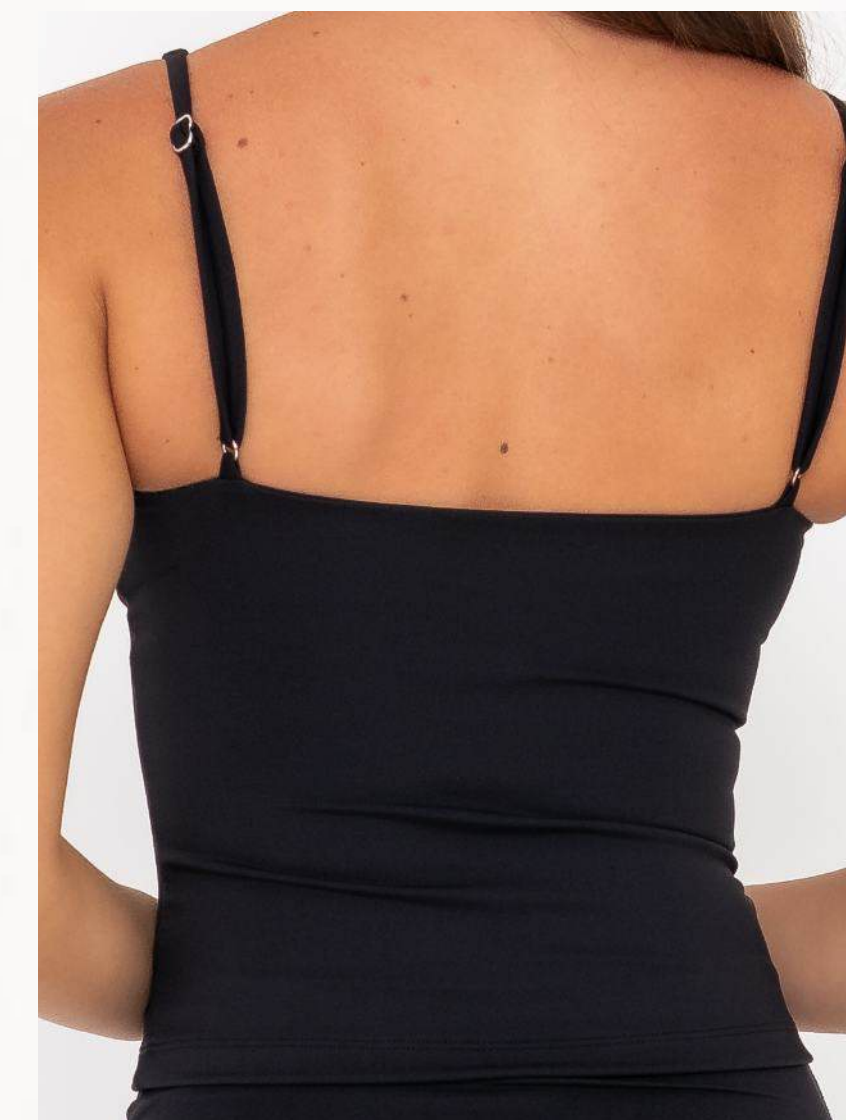
Legging 7/8 Folded Waist No Seam - AW 25-024

7/8 length with folded waistband for a smooth, sculpted fit.

Flexible · Flattering · No front seam

Solid Colours : \$22.40 - \$23.99

Printed : \$24.90 - \$26.50





Vion Set

Crop Top Halter Neck Shelf Bra - AW 25-025

*Clean-cut halter with built-in support that hugs & moves with you.
Sleek fit · Light support · Freedom to move*

Solid Colours	: \$15.99 - \$16.90
Printed	: \$16.99 - \$17.90



Bootcut Legging Folded Waist - AW 25-026

*Foldover waistband and gentle flare for everyday flattery.
Soft hold · No front seam · Effortlessly flattering*

Solid Colours	: \$25.40 - \$27.40
Printed	: \$28.18 - \$29.13





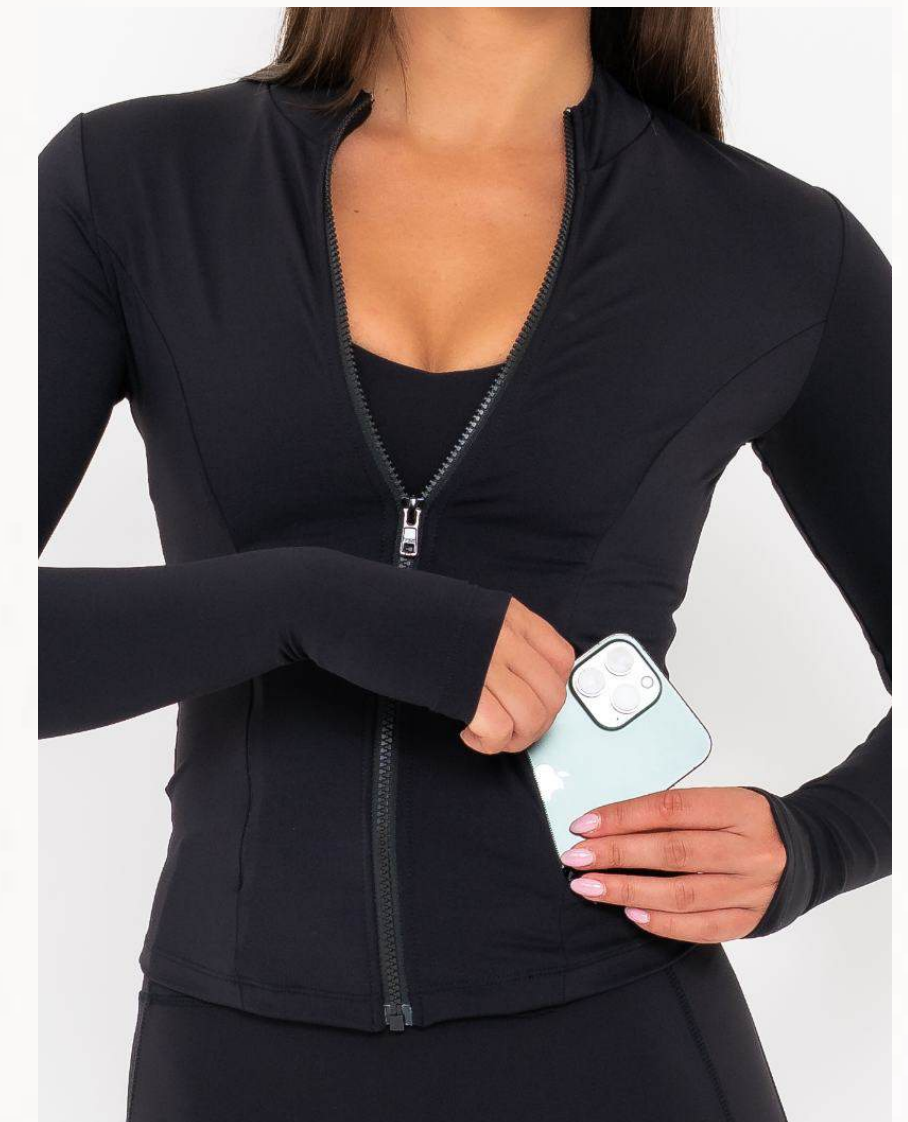
Nuvia Jacket

Top Long Sleeve Panel Zip Pocket - AW 25-027

Sleek and sculpting with thumbholes and hidden sleeve pocket.

Streamlined fit · Functional details · Made to move

Solid Colours	: \$25.40 - \$26.90
Printed	: \$27.50 - \$29.65





Luxen Set

Top Long Sleeve Front Twist - AW 25-028

Scoop neck, sleek fit, and second-skin feel with a modern edge.

Lightweight · Sculpting · Clean finish

Solid Colours	: \$21.92 - \$23.90
Printed	: \$23.94 - \$26.40



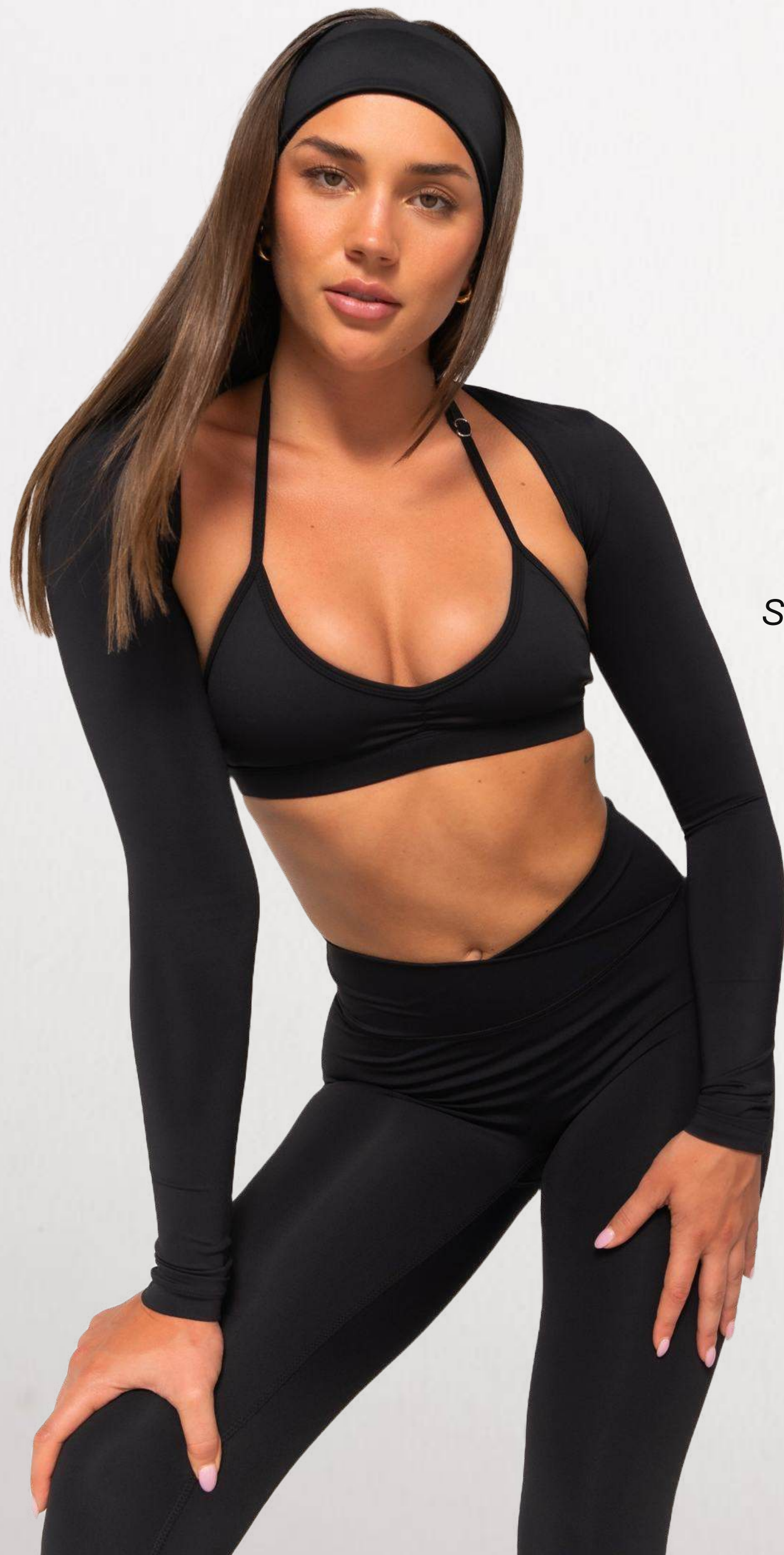
Legging Full Length No Seam - AW 25-029

Contour shaping with a seamless front for a flattering, no-fuss fit.

Body-hugging · No front seam · Made to move

Solid Colours	: \$22.01 - \$23.90
Printed	: \$24.50 - \$25.99





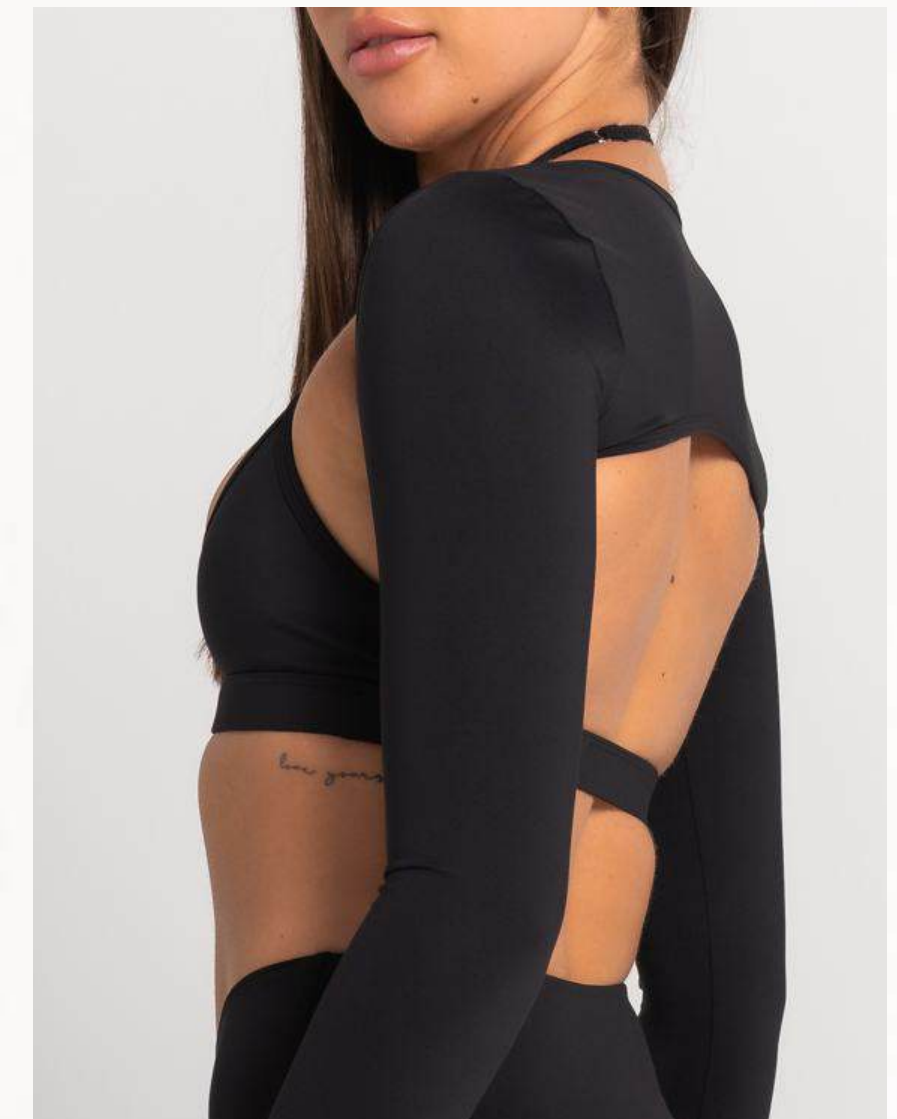
Cyrene Long Sleeve

Long Sleeve Bolero - AW 25-030

Square neckline and open racerback, bold, sculpting, all-day wear.

Minimal design · Supportive fit · Second-skin feel

Solid Colours	: \$17.50 - \$18.50
Printed	: \$18.99 - \$19.99





ovara

Bodysuit Square Neck Cut-Out - AW 25-031

Square neckline with open racerback, bold, sculpting, all-day wear.

Minimal design · Supportive fit · Second-skin feel

Solid Colours : \$23.40 - \$24.99

Printed : \$25.90 - \$27.40





Jorra

Bodysuit Cross Back Short - AW 25-032

*High neck, open back, and cross-back straps for sculpting support & style.
Bold fit · Contouring · All-angle appeal*

Solid Colours : \$27.20 - \$29.08

Printed : \$29.44 - \$32.12





Elsyn

Bodysuit Long Sleeve Cut-Out - AW 25-033

*Long sleeve with open back and clean front, sleek, sculpted, standout fit.
Second-skin feel · Contouring fit · Statement piece*

Solid Colours	: \$27.99 - \$30.04
Printed	: \$31.62 - \$34.78



Contact Us

Let's Build Your *Activewear* Brand

With 30+ years in the industry, we have the expertise to help you launch efficiently. Getting started with our ready designs is faster than requesting custom designs, often saving weeks or more in your brand launch date.

If you need support in any way, we are here to help get you started. You can schedule a call back with a sample specialist to go over your ideas and maybe help refine or enhance your collection. We can easily provide actionable advice on fabrics, colours, branding, and logo placement.

Brands that schedule a callback tend to launch **sooner**, **smarter**, and **grow faster**.

 [**Schedule a Call-Back**](#)

 [**WhatsApp**](#)

 [**Email Us**](#)

 [**Visit Our Factory**](#)



ACTIVEWEAR BALI