

A woman with blonde hair is posing in a beige and orange athletic outfit. She is leaning against a dark metal structure, possibly a staircase or railing. The outfit consists of a crop top and leggings with orange accents. She is wearing white sneakers. The background is dark and industrial.

# ACTIVEWEAR BALI

2023 SPRING SUMMER

# YOUR BRAND IN 4 WEEKS

Our Collection of ready-to-order designs was assembled using some of the best-selling shapes of 2022 as well as our knowledge of what's trending well into the Spring of 2023. If you're seeking inspiration in designing your Collection, this is a great place to start. To make our Collection individually yours, we simply need to add a branded heat press logo to the inside back of each article.

After you have gone over our styles & have selected the designs you love, you need to decide on what fabric & colours & or prints you want them produced in. Once done, all that's left to do is to fill in this form & send it back to us

Once received, we'll get back to you confirming your selection, including prices & total costs.

Whenever you're ready, we can get started producing your samples.

## Notes

- Any design can be produced in any fabric, colour or print, with the possible combinations virtually limitless.
- Should you request alterations, like making a bum coverage more moderate or cheeky, adding cups, wires, etc., in most cases, we can accommodate.



- If you select your designs from our Catalogue and choose your colours from our stocks, orders are being readied for dispatch in just four weeks. This has to be the fastest way to get up & running in your own sustainable Activewear business.
- We require your branded Logo to heat press each article as soon as you are committed to working with us.

You can see most of our designs shot in our Campaign [Video](#).  
[How to create a branded Logo](#)

*Our latest Ready To Order Catalog is now ready to order.  
If any interest, send an email to [get.started@activewearbali.com](mailto:get.started@activewearbali.com)  
and we'll send direct to your inbox*

A woman with long blonde hair is posing on a dark, industrial-style staircase. She is wearing a black athletic top and leggings with white trim. Her right arm is raised, touching her hair, and her left hand is resting on her hip. The background is dark and moody, with the metal railings of the stairs visible.

**2023**

SPRING SUMMER  
READY TO ORDER  
COLLECTION

# PRICE CODES



## PLAIN DYE

A

ECO OLYMPUS

B

VITA POWER

C

COMFORT LUXE

## ADDING PRINTS

Tops & Shorts, + approx USD 2.50

Leggings, + approx USD 4.00



CROSSBACK PANEL TOP

SS/23-037

A : \$ 15.90      B : \$ 16.40      C : \$ 16.40



SIDE PANEL 7/8 LEGGING WITH POCKET

SS/23-038

A : \$ 21.90      B : \$ 22.99      C : \$ 23.40



V NECK CROSS BACK CROP TOP

SS/23-039

A : \$ 15.40

B : \$ 15.90

C : \$ 15.90

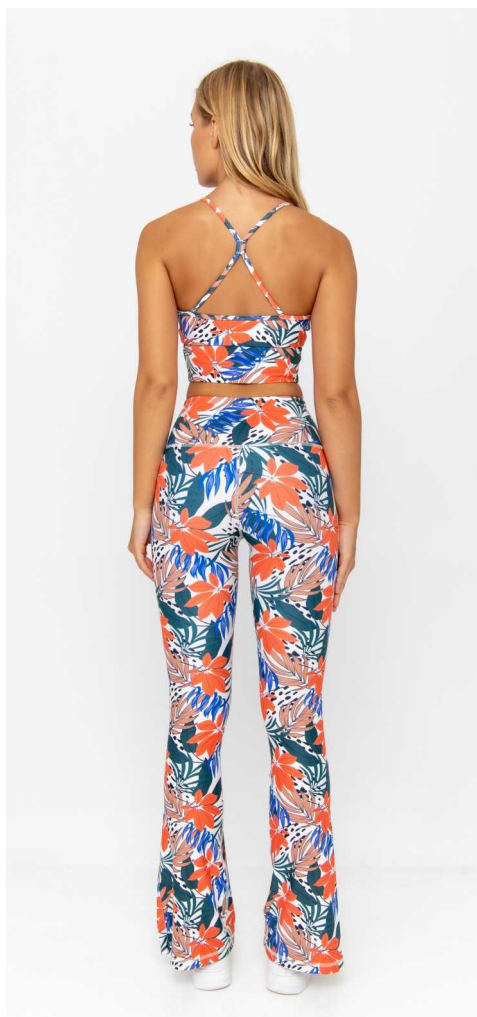
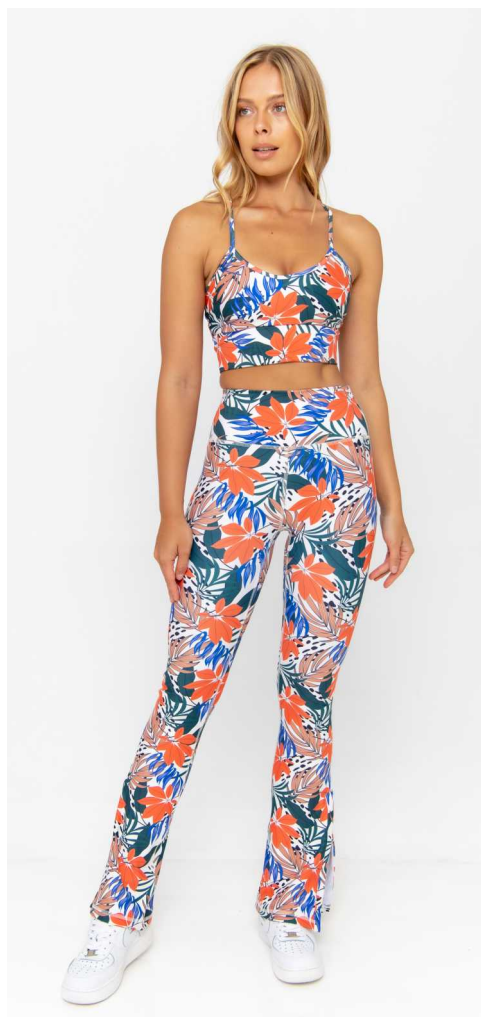
SIDE CUTS FLARED LEGGINGS

SS/23-040

A : \$ 23.70

B : \$ 25.60

C : \$ 25.90



PANEL UNDERWIRE TOP

SS/23-041

A : \$ 16.99    B : \$ 17.50    C : \$ 17.50

PANEL FLARED LEGGINGS

SS/23-042

A : \$ 23.10    B : \$ 24.90    C : \$ 25.20





## TWIST FRONT TOP

SS/23-043

A : \$ 15.50    B : \$ 16.40    C : \$ 16.40

## PANEL TRAINING SHORT

SS/23-044

A : \$ 16.40    B : \$ 16.99    C : \$ 16.99



SCOOP NECK TOP CROSS BACK STRAPS

SS/23-045

A : \$ 18.90    B : \$ 19.50    C : \$ 19.50

FULL LENGTH PANEL LEGGINGS

SS/23-046

A : \$ 21.99    B : \$ 23.40    C : \$ 23.70



CUT OUT BACK SPORTS BRA WITH JACQUARD

SS/23-047

A: \$16.40

B: \$16.90

C: \$16.90

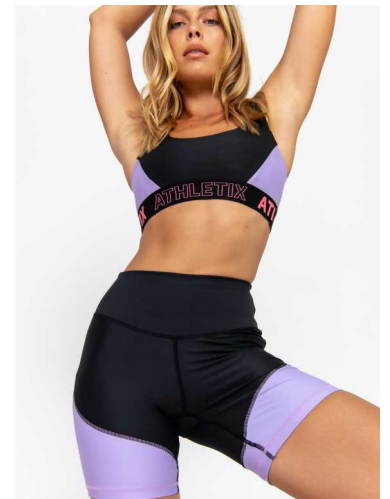
TRAINING SHORT WITH CURVED PANELS

SS/23-048

A: \$16.90

B: \$17.50

C: \$17.90



SQUARE NECK TOP WITH ADJUSTABLE STRAP

SS/23-049

A: \$ 16.99

B: \$ 17.50

C: \$ 17.90

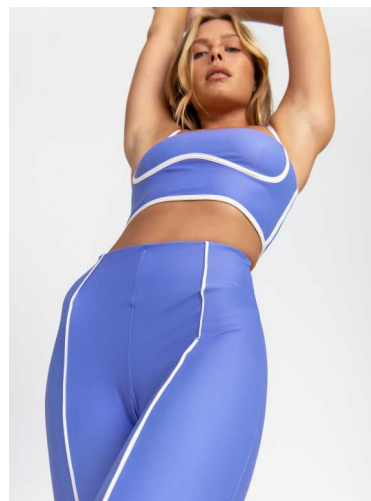
FULL LENGTH LEGGING WITH PIPING

SS/23-050

A: \$ 21.99

B: \$ 23.60

C: \$23.90



## SCOOP NECK V BACK TOP

SS/23-051

A : \$ 15.90    B : \$ 16.40    C : \$ 16.50

## THIGH PANELS FULL LENGTH LEGGING

SS/23-052

A : \$ 22.90    B : \$ 24.60    C : \$ 24.90





HIGH NECK TOP CUT OUT BACK WITH JACQUARD

7/8 LENGTH LEGGING

SS/23-053

SS/23-054

A: \$ 18.50

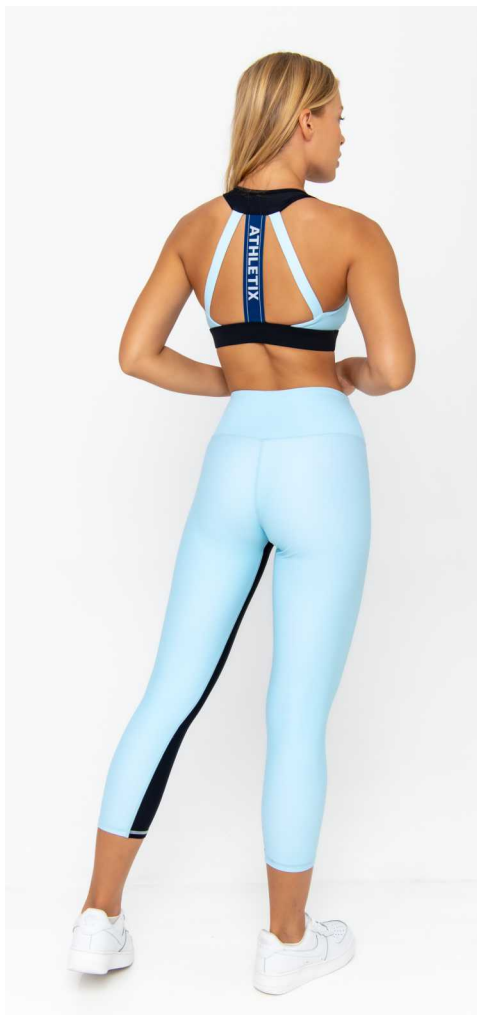
B: \$ 19.40

C: \$ 19.40

A: \$ 19.99

B: \$ 20.99

C: \$ 21.40



SCOOP NECK TOP WITH Y BACK

SS/23-058

A : \$ 14.99    B : \$ 15.50    C : \$ 15.90

PANEL BIKER SHORT

SS/23-059

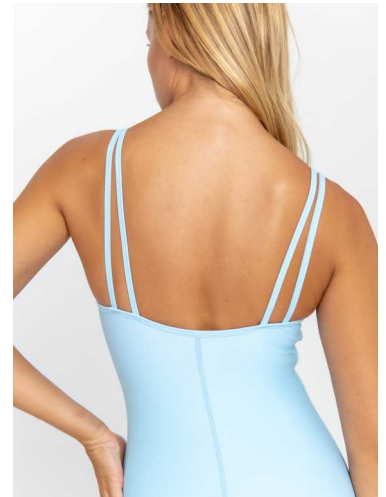
A : \$ 15.90    B : \$ 16.50    C : \$16.50



DOUBLE STRAPS V NECK BODY SUIT

SS/23-055

A : \$ 20.40    B : \$ 21.40    C : \$ 21.40



## DOUBLE STRAPS CROSS BACK BODY SUIT

SS/23-056

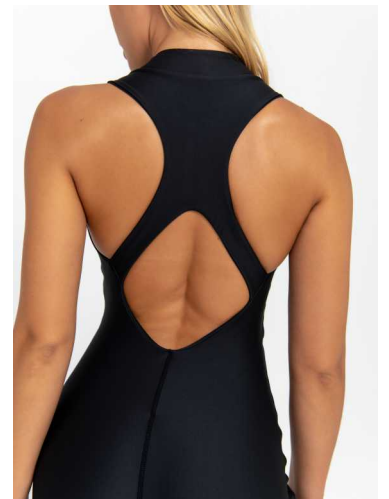
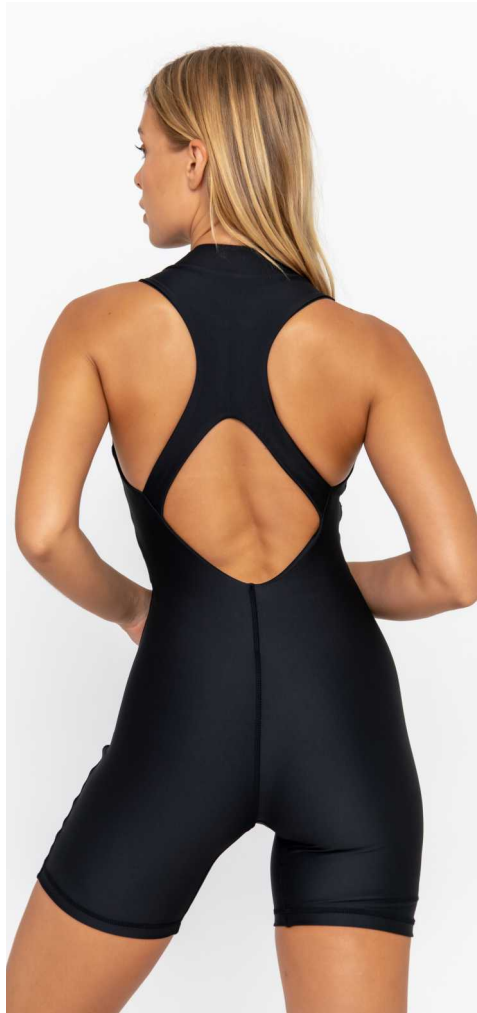
A : \$ 22.40    B : \$ 23.40    C : \$ 23.50



## HIGH NECK CUT OUT BODYSUIT WITH ZIPPER

SS/23-057

A : \$ 22.50    B : \$ 23.50    C : \$ 23.90





# HOW TO ORDER



# STEP 1

## BRANDING YOUR COLLECTION



The first thing we handle is your brand artwork you're looking to add as a heat press into the inside back of each article. We require this sent over ideally in Vector format in either EPS, PDF, CDR or JPEG, high resolution 300 dpi, as soon as you are committed to working with us. If you struggle to do this, send us what you have.

Also, we can brand metal clips, hygienic liners & packaging, adding some bling, quality & style to your Collection.

Read more on [Branding & Accessories](#)

STEP 2  
**SAMPLING  
OR DIRECT TO BULK?**



Even though our ready-to-order collection has been patterned & graded to international body sizes & checked on a Fit Model, some clients still request actual samples. If that's you, we charge twice our estimated price, plus a USD 30 management fee per style.

For example, a legging at USD 19, is charged at  $2 \times \$19 + \$30 = \$68.00$ .

Once you place your bulk PO, we credit back your management fee.

### **Time Line to Produce**

By far, the fastest way to work is to select your fabrics & colours from our imported stocks, seeing your bulk PO landing on your doorstep via DHL in 4 weeks. This is the most popular way start-up brands get started into their own sustainable women's Activewear brand today at the lowest costs.

If you're looking to add some prints or requesting colours to be imported, allow an additional 2-3 weeks.

We always suggest checking [our Body Size Guide](#) to ensure our grading fits your target audience.

## STEP 3

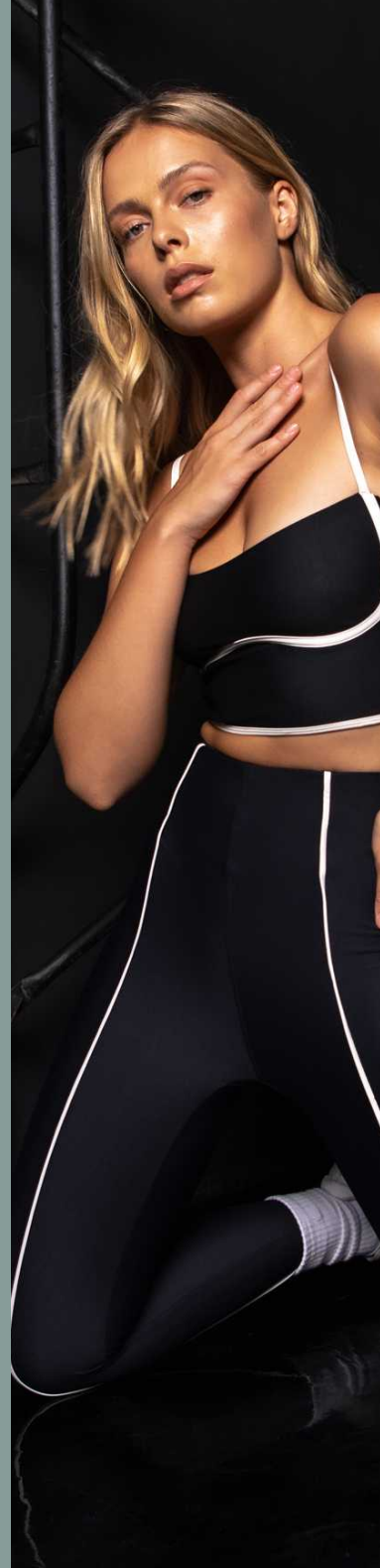
# SELECTING FABRICS

One of the most critical decisions will be the fabrics & colours & or prints you select to make your designs in. As we keep 30,000 meters of the latest trending colours in stock makes, selecting from our colours has become the number one choice for many start-up brands on smaller budgets. Saying that it's also quite common to see new brands select one or two colours or prints to be imported.

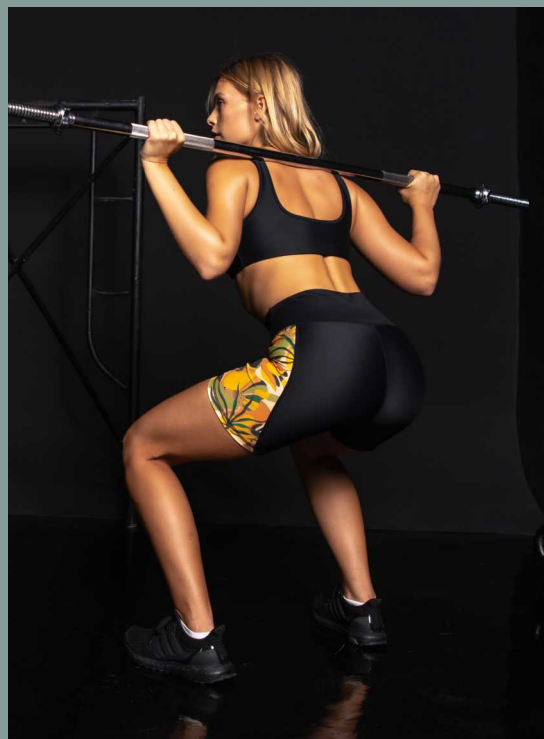
Colours not in stock are added to our weekly flights into Bali.

See the [huge array of fabrics](#) in stock & those we can import.

As selecting your fabrics without feeling what's available can be tricky, we suggest [purchasing a fabric pack for \\$65](#), which includes one real fabric swatch of each of the fabrics on our website & corresponding laser copy could cards. Importing fabrics come in rolls of 70m & have to be used ~~24~~ total in your bulk PO







# ADDING PRINTS

We notice that brands adding prints to their collections are gaining a faster foothold in the market. This could be for several reasons. Firstly, prints for 2023 are very much back on trend. Secondly, printing digitally is easy & fast to handle, much faster to import than plain colours, & thirdly, we are the only company in Bali offering a digital print service on Nylon; all others offer a sublimation print on Polyester, never as soft as digital on Nylon, & colours nowhere near as true to the eye.

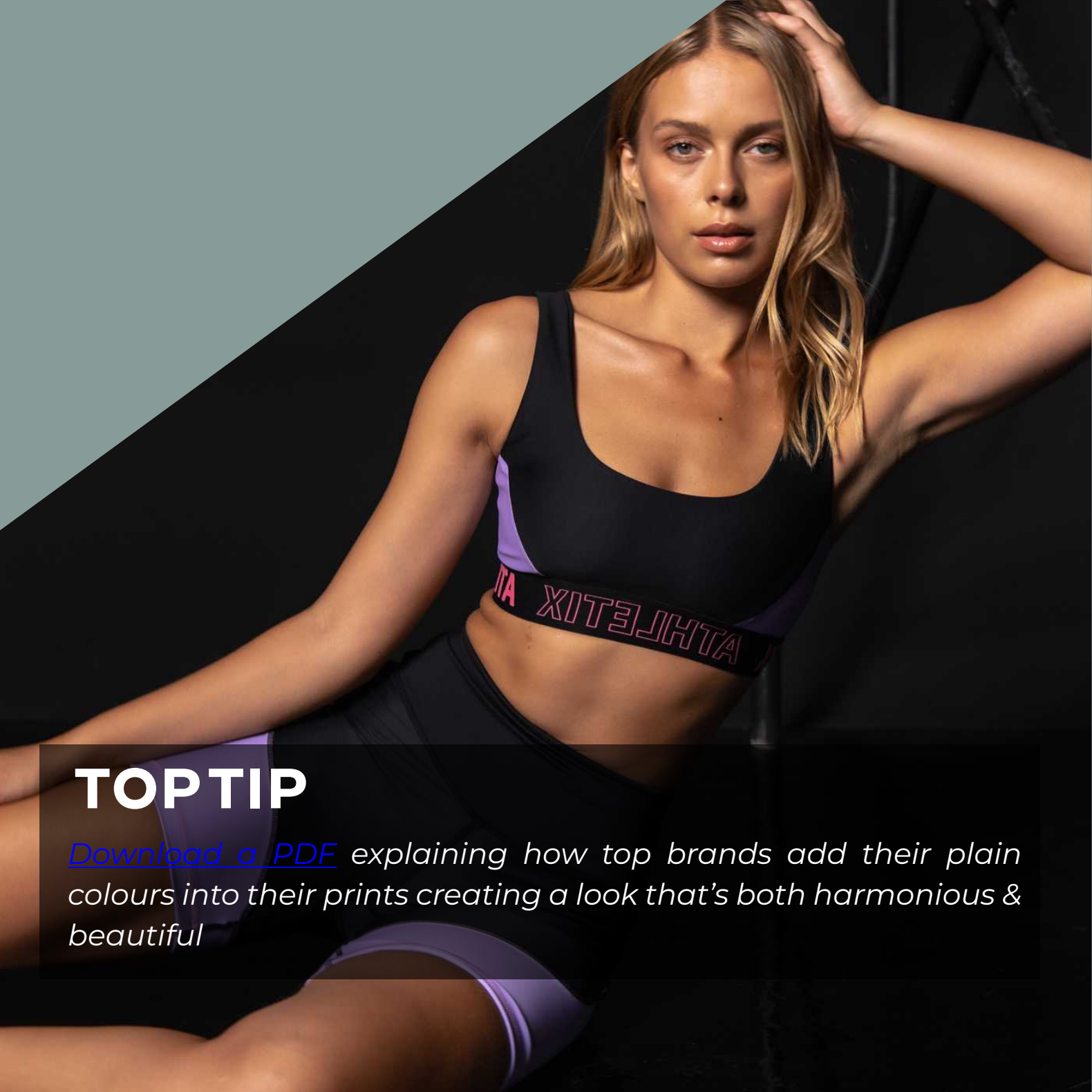
If you're short on time and seeking a speedy solution, we print via sublimation in Bali using Eco-Olympus Power Fit, recycled Poly from Korea

Allow just 2-3 days to process, whether samples or bulk.

Purchase prints online can reduce a task that's both costly & time-consuming to one that can be completed in one hour or so at a fraction of the cost.

Read how to [add amazing prints](#) for a few dollars in simple steps. Lastly, if you're short on time and looking for a speedy solution, we print via sublimation in Bali using VITA PL/ECONYL®, recycled Polyester from Carvico.

Requires 2-3 days, whether samples or bulk.



## TOPTIP

[Download a PDF](#) explaining how top brands add their plain colours into their prints creating a look that's both harmonious & beautiful

## STEP 4

# PRICING YOUR DESIGNS, EITHER OURS OR YOURS

Once you have selected your designs, please take note of the codes & the fabrics, colours & or prints you want them produced in.

1. Selecting from our Ready to Go Designs - Send over your order via our [Bulk Order Form](#) or [Sample Request Form](#)
2. Adding some of your own custom designs to some of ours – Fill in the form above & send you designs as screenshots, tech packs or links with notes added in a Word or PDF Doc via [Email](#) or [WhatsApp](#).

In 2-3 days, we'll get back to you with your prices & any questions answered.

# MOCKING UP YOUR SELECTED DESIGNS

Once you have made payment, we mock up your Collection free of charge. For the scenario below, we selected one pair of training shorts, four tops and three legging. These were then placed on a 2D model in some hypothetical colours & prints. Being able to see your designs, colours & or prints in virtual 2D allows you to visualize more clearly, what your final Collection will look like on.

## EXAMPLE CUSTOMER SELECTION

Designs Selected From Our Catalogue

SS/23 - 043  
SS/23 - 044



Black + Print

SS/23 - 039  
SS/23 - 040



Print

SS/23 - 049  
SS/23 - 050



Print

SS/23 - 057



Pine



## ABOVE HANDOVER, MOCKED-UP BELOW

SS/23 - 043  
SS/23 - 044



SS/23 - 039  
SS/23 - 040



SS/23 - 049  
SS/23 - 050



SS/23 - 057



### Notes

- We never add surcharges; you'll only ever be charged the prices shown.
- Custom branding & freight are charged in addition.
- Bikini sets can be ordered as seen or as a mix.
- Should you request any style made reversible, we add a tear-away label.

## END COLLECTION SHOT PROFESSIONALLY



To see a full mock-up branded in more detail, go [here](#)

### Notes

- You'll only ever be charged the prices shown; no surcharges added.
- Only Custom branding & deliveries are charged in addition.
- Tops & bottoms can be ordered as seen or as a mix.

# DISPATCH & DELIVERY



We dispatch your samples & production orders via FedEx or DHL. Both couriers arrive daily at our office, picking up & dropping off packages. Allow 4-7 working days to your door.

Read more about overseas [Deliveries](#)

# CONTACT US

## Talk to one of our Activewear Specialists

Our ladies are online to take  
your call GMT +8

Out of Hours, Leave a Message

[Email](#)[Whatsapp](#)

## Our Location

Come visit our facilities,  
meet the team & take a tour  
of our facilities

[Call Back](#)

Find us on Google Maps

[Google Maps](#)

# ACTIVEWEAR BALI

2023 SPRING SUMMER COLLECTIONS

Jalan Raya Kerobokan No.1X  
Br. Semer Kerobokan, Kuta Utara  
Kabupaten Badung , Bali 80361  
Indonesia

[get.started@activewearbali.com](mailto:get.started@activewearbali.com)  
[www.activewearbali.com](http://www.activewearbali.com)